

# Trailer Estates

A SUBDIVISION IN MANATEE COUNTY, FLORIDA

## DESCRIPTION

BEGINNING AT THE SW CORNER OF SECTION 23, TOWNSHIP 35 S., RANGE 17 E., RUN N1°-07'E AND ALONG THE SECTION LINE BETWEEN SECTIONS 22 & 23, 30.0 FT. TO A CONC. MONUMENT FOR A POINT OF BEGINNING; THENCE S88°-46'E 1270.9 FT. TO A CONC. MON., SAID MONUMENT BEING LOCATED ON THE W'LY R/W LINE OF A 100' ROAD KNOWN AS U.S. HIGHWAY NO. 41 OR, "TAMiami TRAIL" THENCE N2°-18'W (CHORD BEARING) 204.1 FT. (CHORD DISTANCE) AND ALONG THE W'LY R/W OF SAID TAMiami TRAIL TO A CONC. MON.; THENCE N1°-15'E (CONTINUING ALONG SAID R/W LINE) 318.3 FT. TO A CONC. MON.; THENCE S88°-44'E 170 FT. TO A CONC. MON. AT A POINT WHERE SAID U.S. NO. 41 NARROWS TO A 66' R/W; THENCE N1°-15'E, AND ALONG THE W'LY R/W OF SAID ROAD, 73.0 FT. TO A CONC. MON.; THENCE N88°-44'W 600.0 FT. TO A CONC. MON.; THENCE N1°-12'E 250.0 FT. TO A CONC. MON.; THENCE N88°-48'W 400.0 FT. TO A CONC. MON.; THENCE N1°-15'E 1630.4 FT. TO A CONC. MON.; THENCE S88°-49'E 400.0 FT. TO A CONC. MON.; THENCE N1°-11'E 150.0 FT. TO A CONC. MON.; THENCE S88°-50'E 600.2 FT. TO A CONC. MON. ON THE W'LY R/W LINE OF AFORESAID U.S. NO. 41; THENCE N1°-15'E AND ALONG SAID R/W 13.0 FT. TO A CONC. MON.; THENCE N88°-44'W 128.0 FT. TO A 6X6 WOOD STAKE, SAID STAKE BEING ALSO THE NW CORNER OF THE SW 1/4 OF SEC. 23, TWP. 35S., R17E.; THENCE N88°-19'W 1330.3 FT. TO A CONC. MON., SAID CONC. MON. BEING ALSO THE NW CORNER OF THE NE 1/4 OF THE SE 1/4 OF SEC. 22, TWP. 35S., R17E.; THENCE S88°-30'E 665.6 FT. TO A CONC. MON., SAID CONC. MON. BEING ALSO THE SE CORNER OF THE NW 1/4 OF THE SE 1/4 OF THE SE 1/4 OF SEC. 22, TWP. 35S., R17E.; THENCE S1°-11'W 638.3 FT. TO A CONC. MON.; THENCE S88°-34'E 665.7 FT. TO THE POINT OF BEGINNING.

ALSO: BEGINNING AT THE NE CORNER OF SEC. 27, TWP. 35S., R17E., RUN S1°-27'W AND ALONG THE E. LINE OF SAID SEC. 27, 25.0 FT. TO A CONC. MON. FOR A POINT OF BEGINNING; THENCE N88°-34'W 738.5 FT. TO A POINT; THENCE S1°-44'W 203.5 FT. TO A CONC. MON., THENCE E'LY ALONG WATER MARK TO THE INTERSECTION OF THE E. BOUNDARY OF SAID SEC. 27; THENCE N1°-27'E AND ALONG SAID SEC. LINE 638.4 FT. TO THE POINT OF BEGINNING, ALONG WITH ALL RIPARIAN RIGHTS BELONGING THERETO.

## CERTIFICATE OF DEDICATION

STATE OF FLORIDA  
COUNTY OF MANATEE SS

KNOW ALL MEN BY THESE PRESENTS THAT GULF COAST DEVELOPMENT CORP., A FLORIDA CORPORATION, BY ITS DULY ELECTED PRESIDENT, PAUL FASKE, AND BY ITS DULY ELECTED SECRETARY-TREASURER, SIDNEY ADLER, ACTING BY AND WITH THE AUTHORITY OF ITS BOARD OF DIRECTORS, DOES HEREBY DEDICATE AND SET APART ALL STREETS, ALLEYS AND THOROUGHFARES SHOWN ON THIS PLAT TO THE USE OF THE GENERAL PUBLIC FOREVER.

IN WITNESS WHEREOF, THE UNDERSIGNED CORPORATION HAS CAUSED THESE PRESENTS TO BE EXECUTED BY ITS PRESIDENT AND ATTESTED BY ITS SECRETARY-TREASURER.

GULF COAST DEVELOPMENT CORP.

Paul Faske  
PRESIDENT  
Sidney Adler  
SECY - TREAS.

STATE OF FLORIDA  
COUNTY OF SARASOTA SS

BEFORE ME, THE UNDERSIGNED NOTARY PUBLIC, PERSONALLY APPEARED PAUL FASKE AND SIDNEY ADLER, PRESIDENT AND SECRETARY-TREASURER RESPECTIVELY OF GULF COAST DEVELOPMENT CORP. TO ME KNOWN TO BE THE INDIVIDUALS DESCRIBED IN AND WHO EXECUTED THE FOREGOING CERTIFICATE OF DEDICATION, AND THEY EACH DULY ACKNOWLEDGED BEFORE ME THAT THEY EXECUTED THE SAME.

WITNESS MY HAND AND OFFICIAL SEAL AT SARASOTA, SARASOTA COUNTY, FLORIDA THIS 7th DAY OF March, 1955 A.D.

Robert H. Hammond  
NOTARY PUBLIC

MY COMMISSION EXPIRES July 10, 1955

## CERTIFICATE OF SURVEYOR

STATE OF FLORIDA  
COUNTY OF SARASOTA SS

I, THE UNDERSIGNED REGISTERED LAND SURVEYOR, HEREBY CERTIFY THAT THIS PLAT IS A TRUE REPRESENTATION OF THE LAND DESCRIBED AND SHOWN, TO THE BEST OF MY KNOWLEDGE AND BELIEF, AND THAT PERMANENT REFERENCE MONUMENTS HAVE BEEN PLACED AS CALLED FOR UNDER SECTION 177.07-FLORIDA STATUTES 1951

DATE OF SURVEY Feb. 28, 1955

R. W. Pavitt  
R.W. PAVITT  
REG. LAND SURVEYOR  
FLA. CERT. NO. 934

## NOTE:

THE DEVELOPER HEREBY EXPRESSLY RESERVES EASEMENTS 5 FT. ON EACH SIDE OF ALL REAR LOT LINES, AND SUCH OTHER EASEMENTS AS MAY BE INDICATED ON THIS PLAT FOR PIPE LINES, CONDUITS, CABLES, DRAINAGE AND FOR ANY OTHER PURPOSE CONSISTENT WITH THE DEVELOPMENT AND USE OF THE PROPERTY.

THIS IS TO CERTIFY THAT THE NAME OF THE GULF DEVELOPMENT CORP. HAS BEEN ERRONEOUSLY PRINTED AS THE GULF COAST DEVELOPMENT CORP. ON THIS PAGE, DUE TO A DRAFTSMAN'S ERROR. THEREFORE, THE WORD COAST IS HEREBY DELETED FROM THE CERTIFICATE OF DEDICATION, THE SIGNATURE OF THE CORPORATION AND FROM THE NOTARY PUBLIC'S CERTIFICATION.

GULF DEVELOPMENT CORP.  
Paul Faske  
PRESIDENT  
Sidney Adler  
SECY - TREAS.

## CERTIFICATE OF APPROVAL OF COUNTY COMMISSION

STATE OF FLORIDA  
COUNTY OF MANATEE SS

IT IS HEREBY CERTIFIED THAT THIS PLAT HAS BEEN OFFICIALLY APPROVED BY THE BOARD OF COUNTY COMMISSIONERS OF THE COUNTY OF MANATEE, FLORIDA, THIS 7th DAY OF March, 1955 A.D.

Norman Burnett  
CHAIRMAN

ATTEST

Manning P. Smith  
DEPUTY CLERK

## CERTIFICATE OF APPROVAL OF COUNTY CLERK

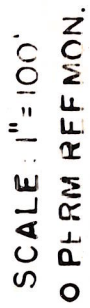
STATE OF FLORIDA  
COUNTY OF MANATEE SS

I, LLOYD M. HICKS, COUNTY CLERK OF MANATEE COUNTY, FLORIDA, HEREBY CERTIFY THAT THIS PLAT HAS BEEN EXAMINED AND THAT IT COMPLIES IN FORM WITH ALL THE REQUIREMENTS OF LAWS OF FLORIDA PERTAINING TO MAPS AND PLATS, AND THIS PLAT HAS BEEN FILED FOR RECORD IN PLAT BOOK 8, PAGE 138, PUBLIC RECORDS MANATEE COUNTY FLORIDA, THIS 16th DAY OF March, 1955 A.D.

Lloyd M. Hicks  
CLERK OF CIRCUIT COURT

State of Florida  
Manatee County  
Circuit Court in and for said County do hereby certify that the foregoing instrument was filed the 16th day of March, 1955 at 4:30 o'clock P. M. and recorded in Plat Book 8 page 138 this 16th day of March, 1955.  
I request my hand and official seal at Manatee, Fla., this day and year last above written.  
Lloyd M. Hicks  
Clerk Circuit Court  
Sue M. Ludlows

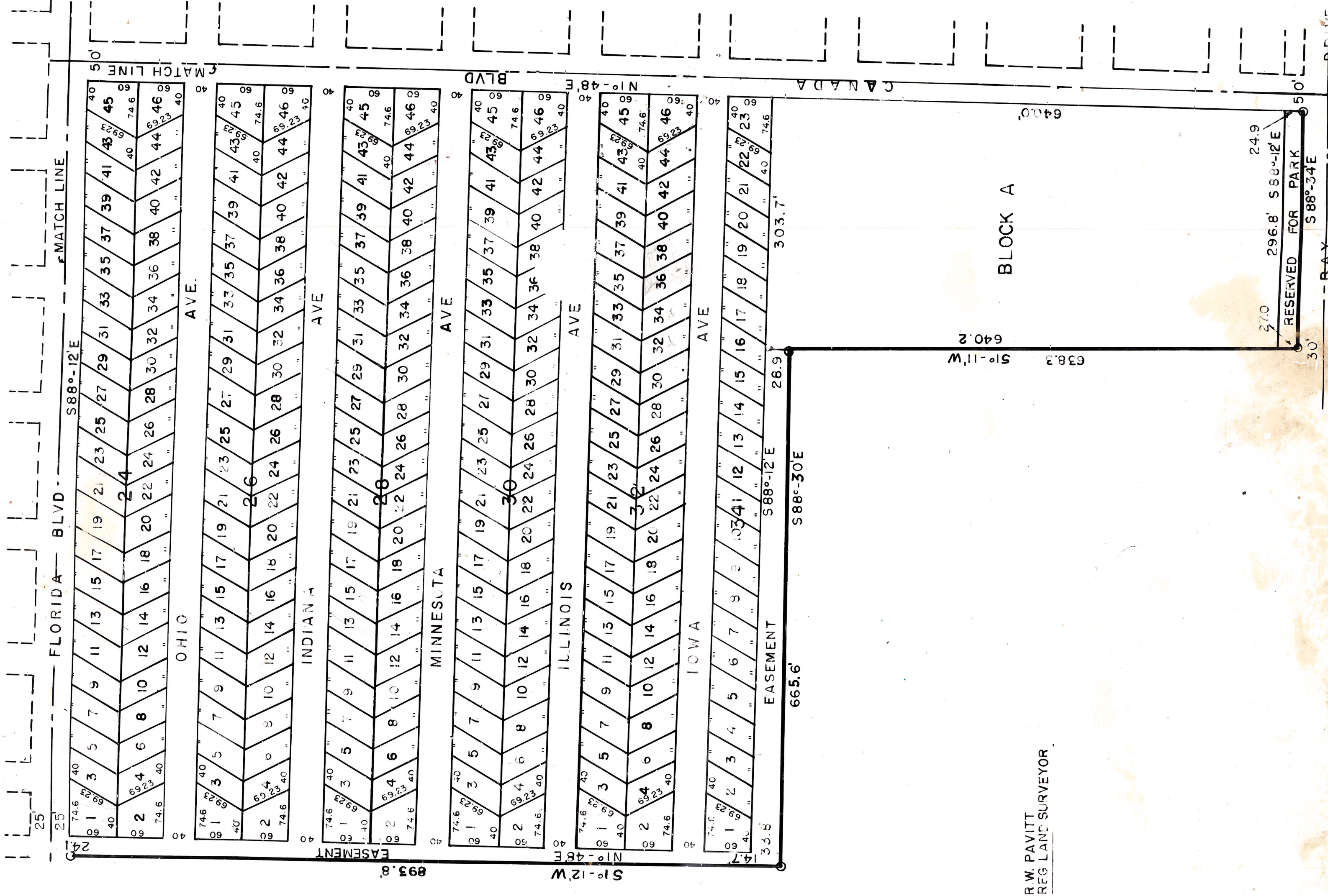




R. W. PAVITT  
REG. LAND SURVEYOR

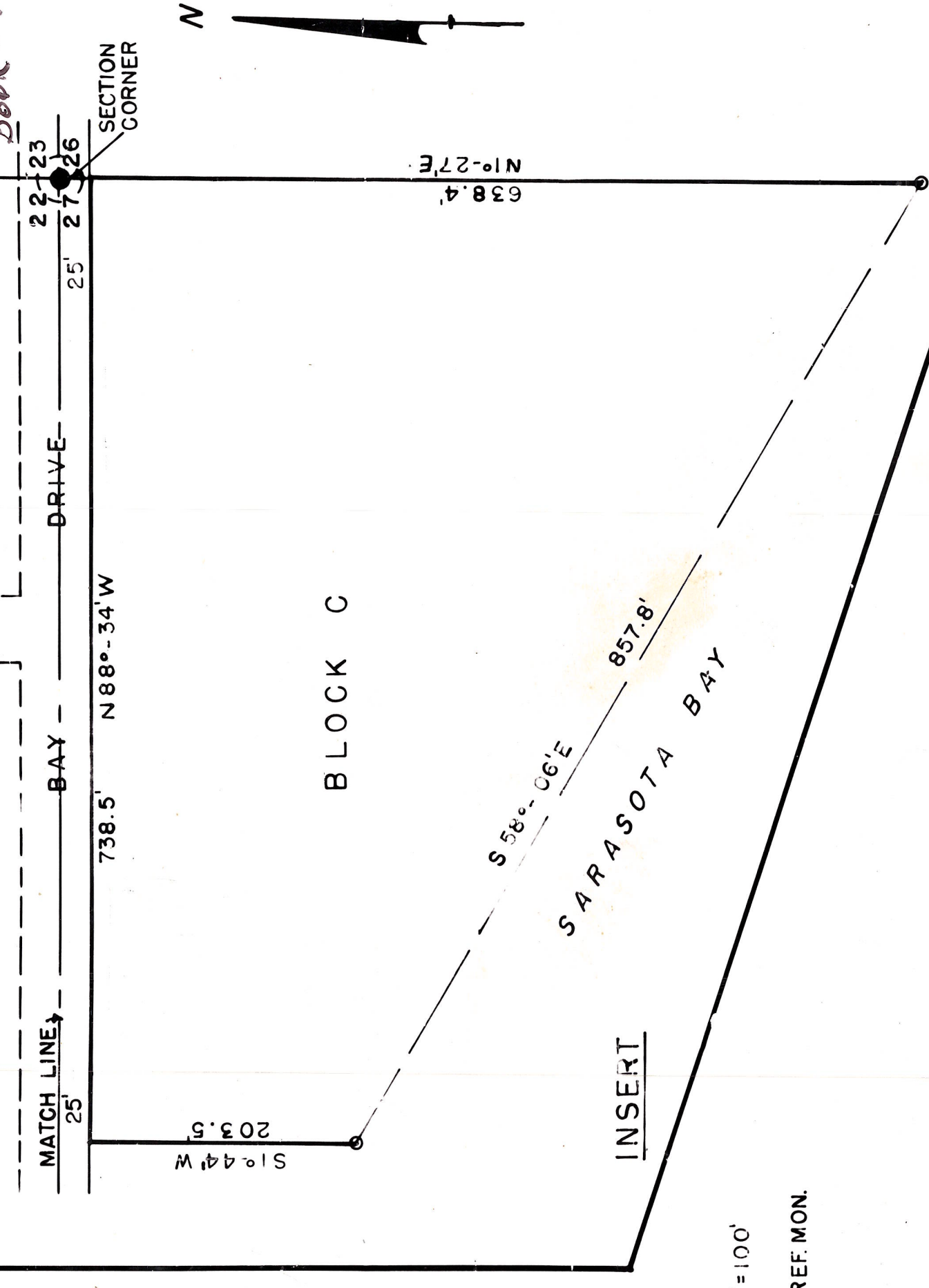
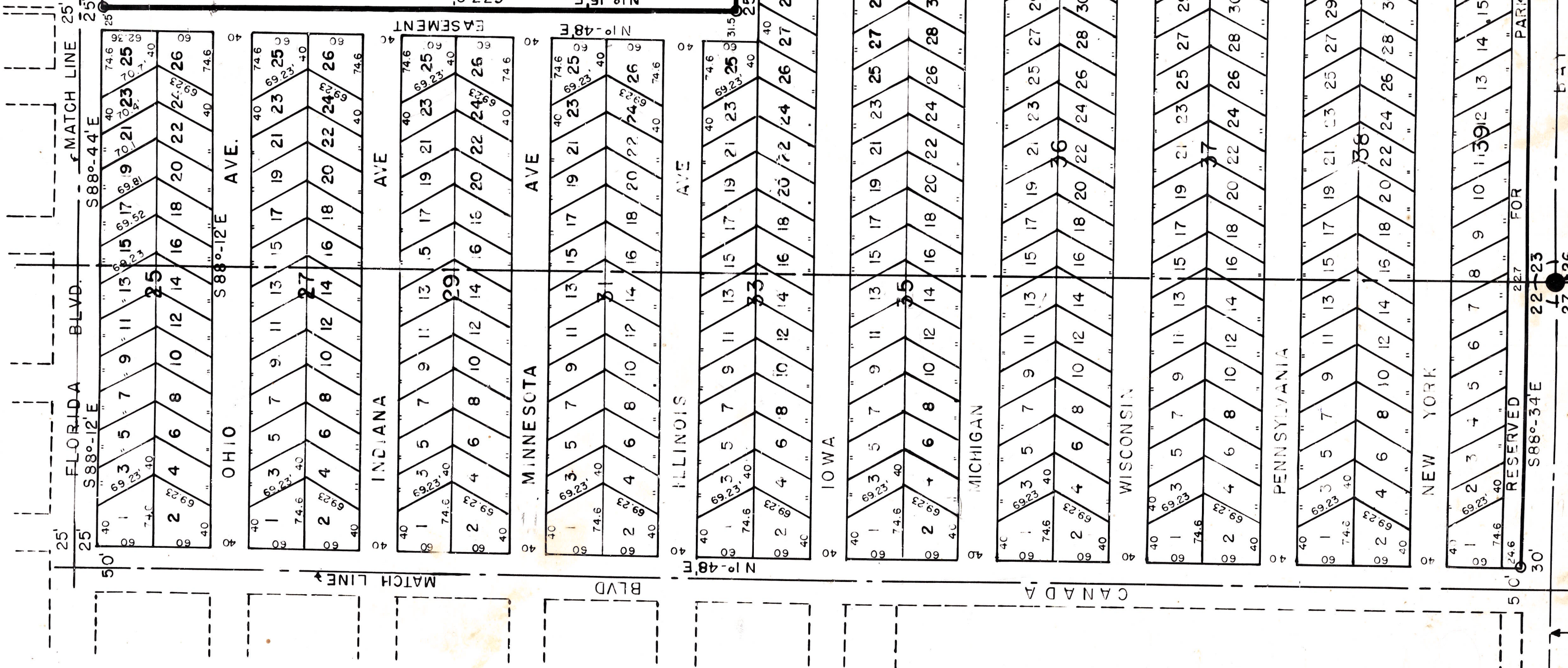
75 120-1  
D.C.W.  
WITH OF  
GRIFFET



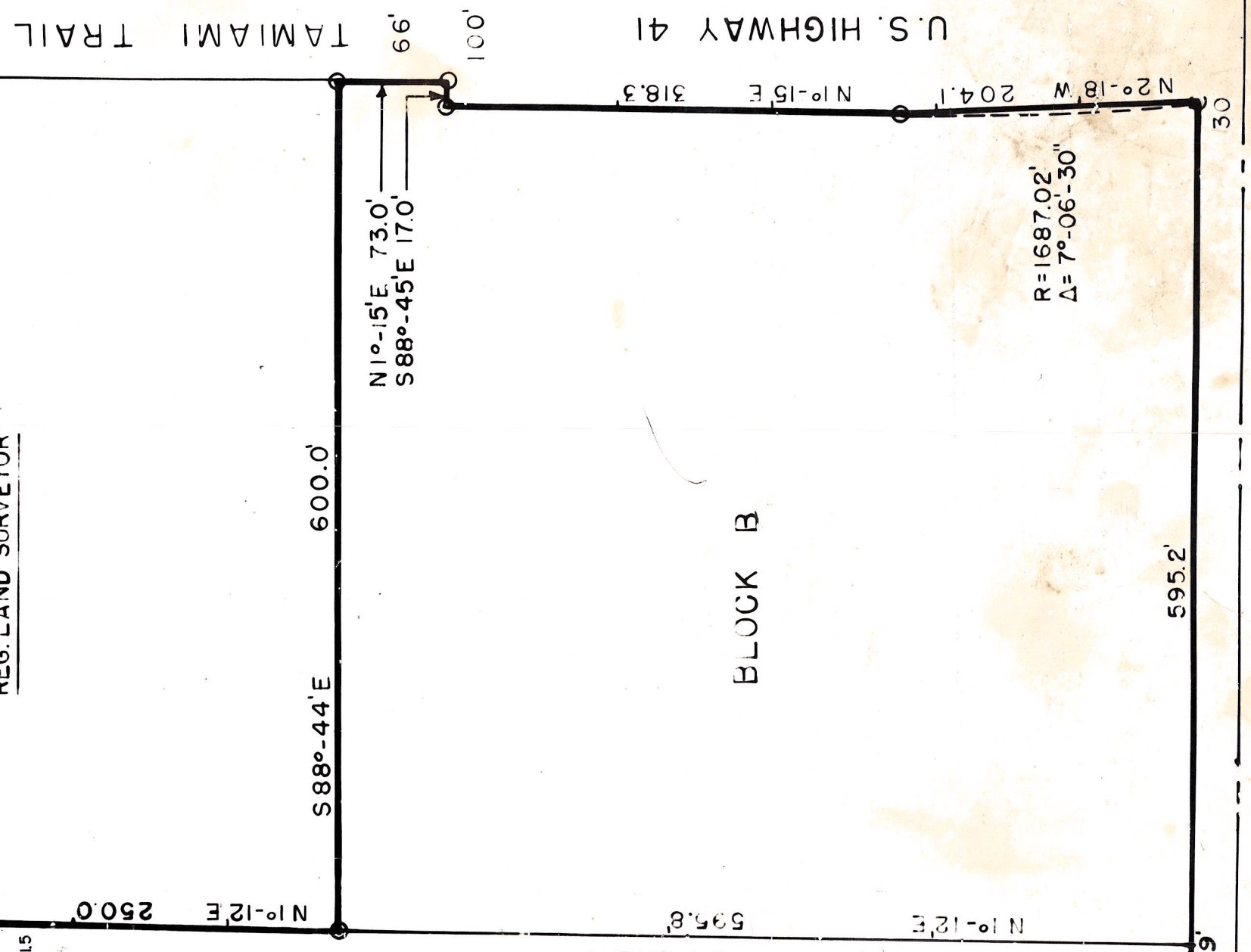




Book 8 Page 141



R.W. PAVITT  
REG. LAND SURVEYOR





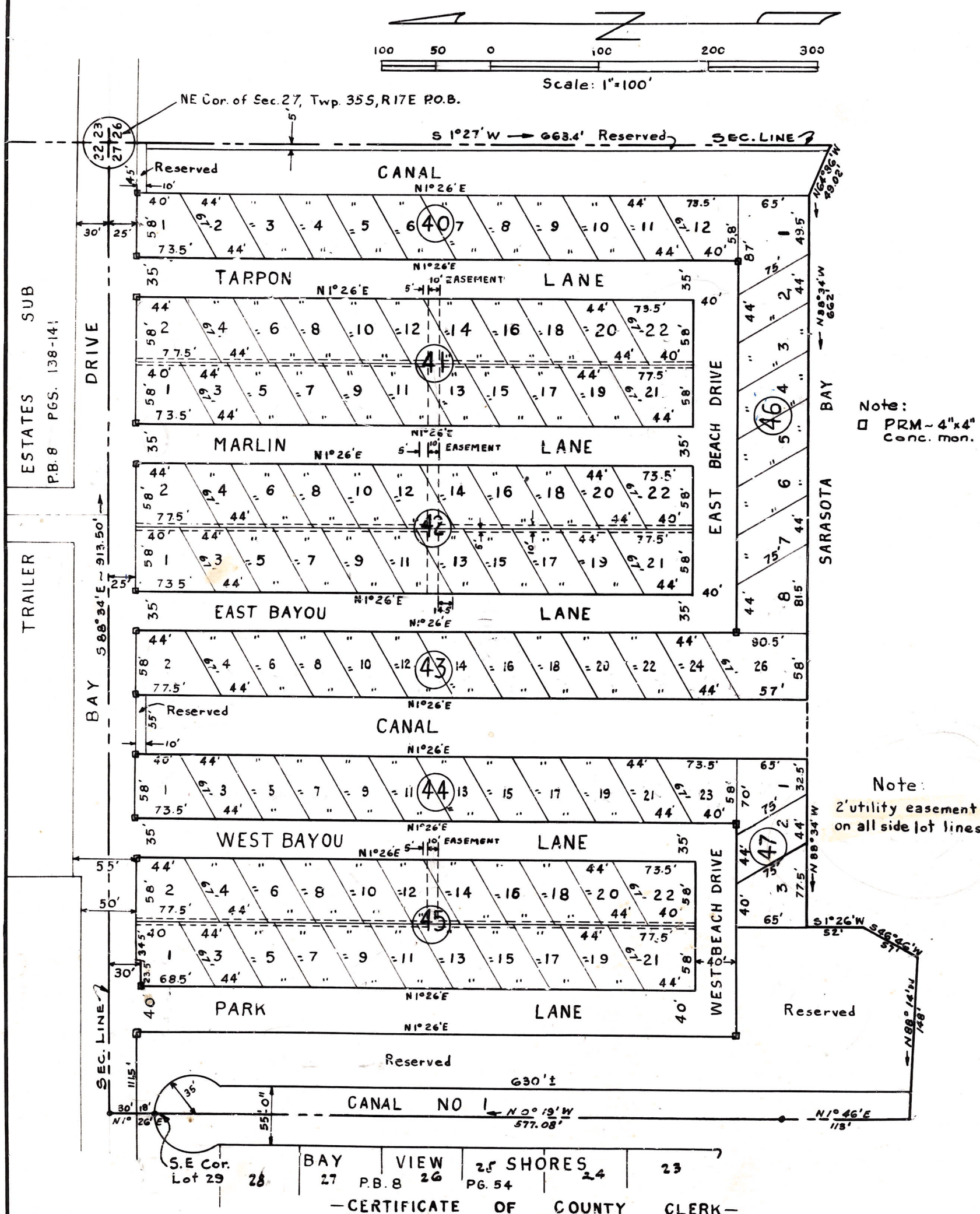
# FIRST ADDITION TO TRAILER ESTATES

Book 9 Page 71

141826

## — DESCRIPTION —

A replat of lots 30 thru 37 inclusive and Emerald Drive of Bay View Shores Subdivision as recorded in Plat Book 8, page 54 public records of Manatee County, and other lands, described as follows: Beginning at the N.E. Corner of Sec. 27 T35S, R17E, Manatee County, Florida, thence, run S 1° 27' W along the East line of said Sec. 27 663.4 feet to a point; thence, run N 64° 36' W 49.02 feet to a point; thence, run N 88° 34' W 662.0 feet to a point; thence, run S 1° 26' W 52.0 feet to a point; thence, run S 46° 46' W 57.0 feet to a point; thence, run N 88° 14' W 148.0 feet to a point in Canal No. 1 of said Bay View Shores Subdivision; thence, run N 1° 46' E 113.0 feet to a point; thence, run N 0° 19' W 577.08 feet to the SE corner of lot 29 of said Bay View Shores Subdivision; thence, run N 1° 26' E along the East line of said lot 29 18.0 feet to the south Right of Way line of Bay Drive; thence continue N 1° 26' E 30.0 feet to the North line of said Sec. 27; thence, run S 88° 34' E along said North line of Sec. 27 913.5 feet to the point of beginning.



## — CERTIFICATE OF COUNTY CLERK —

State of Florida }  
County of Manatee } SS

141826

I, M.T. McInnis, Clerk of the Circuit Court of Manatee County, Florida, hereby certify that I have examined this plat, and I certify that it complies in form with all requirements for making plats and surveys and the filing of the same for record.

Witness my hand and official Seal at Bradenton, Florida, this 1 day of Feb., 1957.

*M.T. McInnis*  
Clerk of the Circuit Court

## — CERTIFICATE OF DEDICATION —

State of Florida }  
County of Manatee } SS

Know all men by these presents that Gulf Development Corp., a corporation organized and existing under the Laws of the State of Florida, the owner of the land described in the description hereto affixed, by and with the authority of the Board of Directors of said Corporation, has caused the attached Plat of a subdivision of land to be made, and does hereby relinquish, release and dedicate to the public, forever, all of the parkways, streets, avenues, boulevards, roads and highways, and all canals or rights-of-way for canals shown on this map, subject to reservation for Utilities. The grantor reserves the exclusive assignable right, in behalf of itself, its successors and assigns, to lay and maintain Utilities, water and sewer lines beneath the surface of the roads.

In Witness Whereof, the said Gulf Development Corp., has caused this instrument to be executed in its name and its Corporate Seal affixed thereto, by its duly authorized officers, this 27 day of August, 1956.

Witness:

*Martin C. Morris*  
*Robert H. Hanenworth*

GULF DEVELOPMENT CORP.  
By *Paul Faske*  
President

ATTEST:  
*Sydney Adler*  
Secretary

State of Florida }  
County of Manatee } SS

Before me, a Notary Public of the State of Florida, personally appeared Paul Faske & Sydney Adler personally known by me to be President & Secretary of said Gulf Development Corp., a Corporation of Florida, and they acknowledged before me that they executed the foregoing instrument freely and voluntarily as the duly authorized act of the said Corporation.

Witness my hand and Seal at Bradenton, Florida, this 27 day of August, 1956.

*Robert H. Hanenworth*  
Notary Public

My commission expires July 14, 1959

## — CERTIFICATE OF ENGINEER —

State of Florida }  
County of Manatee } SS

I certify that the plat of the above described lands in Manatee County, Florida, was made by me based upon a survey of said property made by me on August 21, 1956. I further certify that all Permanent Reference Monuments have been set and all lot corners marked as provided by Manatee County Subdivision Regulations.

Witness my hand and Seal at Bradenton, Florida, this 27 day of Aug. 1956.

*Freeman L. Horton*  
Registered Engineer & Land Surveyor  
Fla. Cert. No's 268 and 273

Subscribed and sworn to before me, this 27 day of Aug 1956.

*Ruth C. Smith*  
Notary Public, State of Florida

My commission expires Dec. 12, 1958

## — PLANNING AND ZONING COMMISSION CERTIFICATE —

This certifies that this plat has been approved by the Manatee County Planning and zoning Commission and that all requirements of the 1955 Manatee County Planning and zoning Law have been complied with.

Dated this 17 day of January, 1957, at Bradenton, Florida.

*Chas. H. Deas*  
Chairman, Manatee County Planning and Zoning Commission.

## — CERTIFICATE OF COUNTY COMMISSIONERS —

State of Florida }  
County of Manatee } SS

This certifies that this plat has been received and accepted by the Board of County Commissioners of Manatee County Florida, and is eligible for record in this County.

The acceptance of this plat shall not be deemed the acceptance of the streets shown hereon, for maintenance.

Dated this 21 day of January, 1957, at Bradenton, Florida.

*John J. Jones*  
Chairman, Board of County Commissioners

ATTEST:

*M.T. McInnis*  
Clerk of the Circuit Court



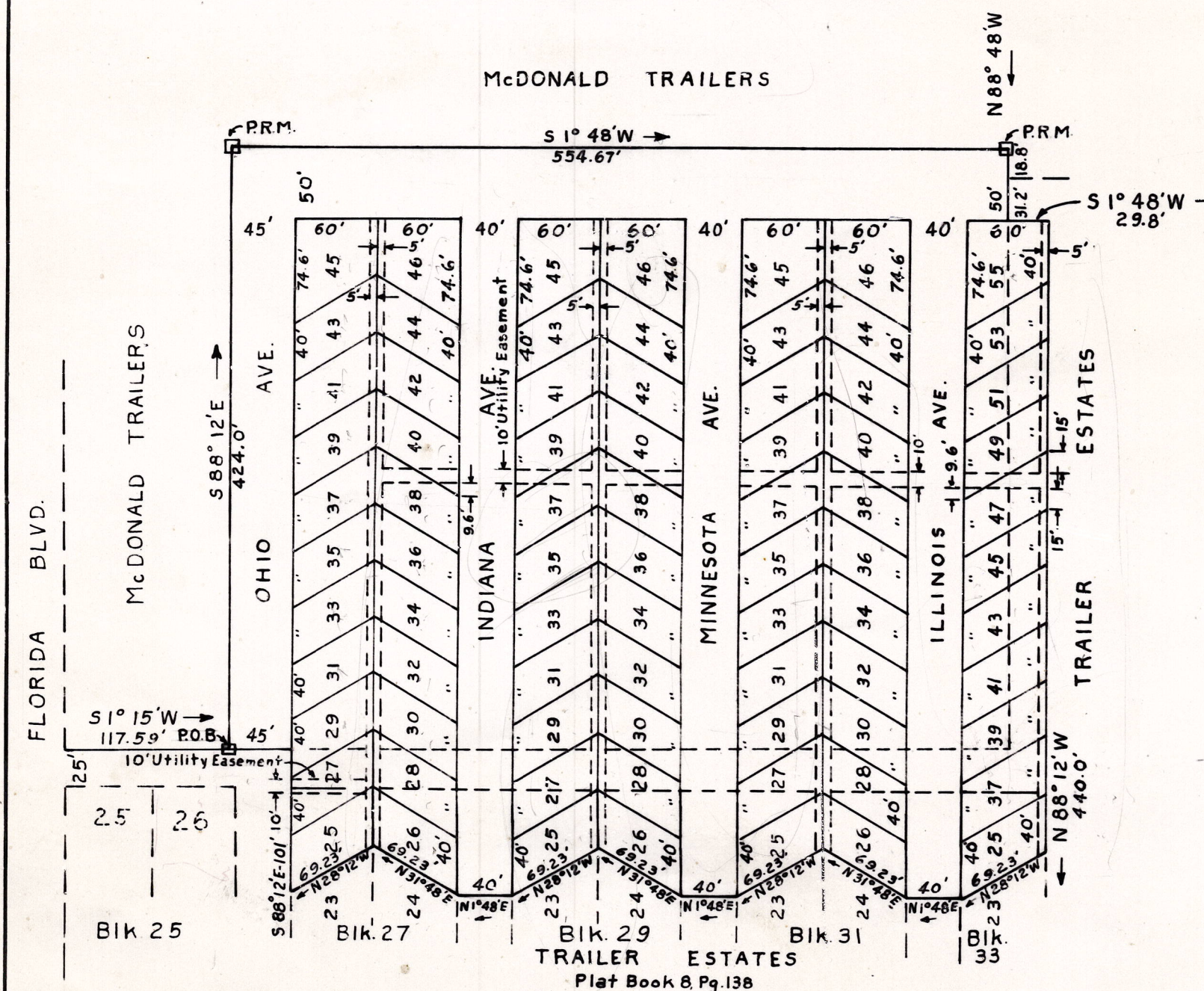
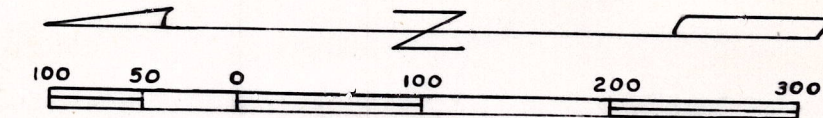
# 138707 SECOND ADDITION TO TRAILER ESTATES

BOOK 9 PAGE 61

Book 9 Page 61

## — DESCRIPTION —

A replat of Lots 25 and 26 of Blocks 27, 29 and 31 and Lot 25 of Block 33, Trailer Estates Sub. as recorded in P.B. 8, pg. 138, Public Records of Manatee Co. and other lands, described as follows: From the NE corner of Lot 25, Block 25 of Trailer Estates as recorded in P.B. 8, pg. 138, Public Records of Manatee Co., Fla. Thence S 88° 44' E along the South R/W line a distance of 25 ft, thence S 1° 15' W a distance of 117.59 ft to the point of beginning; thence S 88° 12' E, 424.0 ft, thence S 1° 48' W, 554.67 ft, thence N 88° 48' W, 50 ft, thence S 1° 48' W, 29.8 ft, thence N 88° 12' W, 440 ft to the SE corner of Lot 23, Block 33 of said Trailer Estates Sub. thence N 28° 12' W, 69.23 ft, thence N 1° 48' E, 40.0 ft, thence N 31° 48' E, 69.23 ft, thence N 28° 12' W, 69.23 ft, thence N 1° 48' E, 40.0 ft, thence N 31° 48' E, 69.23 ft, thence N 28° 12' W, 69.23 ft, thence N 1° 48' E, 40.0 ft, thence N 31° 48' E, 69.23 ft, thence N 28° 12' W, 69.23 ft, thence S 88° 12' E, 101.0 ft, thence N 1° 15' E, 45.0 ft to point of beginning; said land being in the SW 1/4 of Sec. 23, T 35 S, R 17 E Manatee Co. Fla.



NOTE:  
2' Utility Easement on  
all side lot lines.

## — CERTIFICATE OF COUNTY CLERK —

State of Florida } SS  
County of Manatee }

I, Lloyd M. Hicks, Clerk of the Circuit Court of Manatee County Florida hereby certify that I have examined this plat and I certify that it complies in form with all requirements for making plats and surveys and the filing of the same for record. Witness my hand and official Seal at Bradenton, Florida this 21 day of Nov. 1956.  
Lloyd M. Hicks  
Clerk of the Circuit Court

## — CERTIFICATE OF DEDICATION —

State of Florida } SS  
County of Manatee }

Know all men by these presents that Gulf Development Corp., a corporation organized and existing under the Laws of the State of Florida the owner of the land described in the description hereto affixed, by and with the authority of the Board of Directors of said Corporation has caused the attached Plat of a subdivision of land to be made, and does hereby relinquish, release and dedicate to the public, forever, all of the parkways, streets, avenues, boulevards, roads and highways and all canals or rights-of-way for canals shown on this map, subject to reservation for Utilities. The grantor reserves the exclusive assignable right, in behalf of itself its successors and assigns to lay and maintain Utilities, water and sewer lines beneath the surface of the roads.

In Witness Whereof, the said Gulf Development Corp., has caused this instrument to be executed in its name and its Corporate Seal affixed thereto by its duly authorized officers this 19 day of November 1956.

Witness:  
Philip Shapiro  
Margaret Roberts

GULF DEVELOPMENT CORP.  
By Paul Faske  
President

ATTEST:  
Sydney Adler  
Secretary

State of Florida } SS  
County of Manatee }

Before me, a Notary Public of the State of Florida, personally appeared Paul Faske & Sydney Adler personally known by me to be President & Secretary of said Gulf Development Corp., a Corporation of Florida, and they acknowledged before me that they executed the foregoing instrument freely and voluntarily as the duly authorized act of the said Corporation.

Witness my hand and Seal at Bradenton, Florida this 19 day of November, 1956.  
Margaret Roberts  
Notary Public

My commission expires 5-11-59

## — CERTIFICATE OF ENGINEER —

State of Florida } SS  
County of Manatee }

I certify that the plat of the above described lands in Manatee County Florida was made by me based upon a survey of said property made by me on August 15, 1956. I further certify that all Permanent Reference Monuments have been set and all lot corners marked as provided by Manatee County Subdivision Regulations.

Witness my hand and Seal at Bradenton, Florida this 14th day of Nov. 1956.  
Freeman H. Horton  
Registered Engineer & Land Surveyor  
Fla. Cert. Nos. 268 and 273

Subscribed and sworn to before me, this day of Nov. 1956.

Notary Public, State of Florida

My commission expires

## — PLANNING AND ZONING COMMISSION CERTIFICATE —

This certifies that this plat has been approved by the Manatee County Planning and Zoning Commission and that all requirements of the 1955 Manatee County Planning and Zoning Law have been complied with. Dated this 15 day of Nov. 1956 at Bradenton, Florida.

William P. Williams  
Chairman, Manatee County Planning and Zoning Commission

## — CERTIFICATE OF COUNTY COMMISSIONERS —

State of Florida } SS  
County of Manatee }

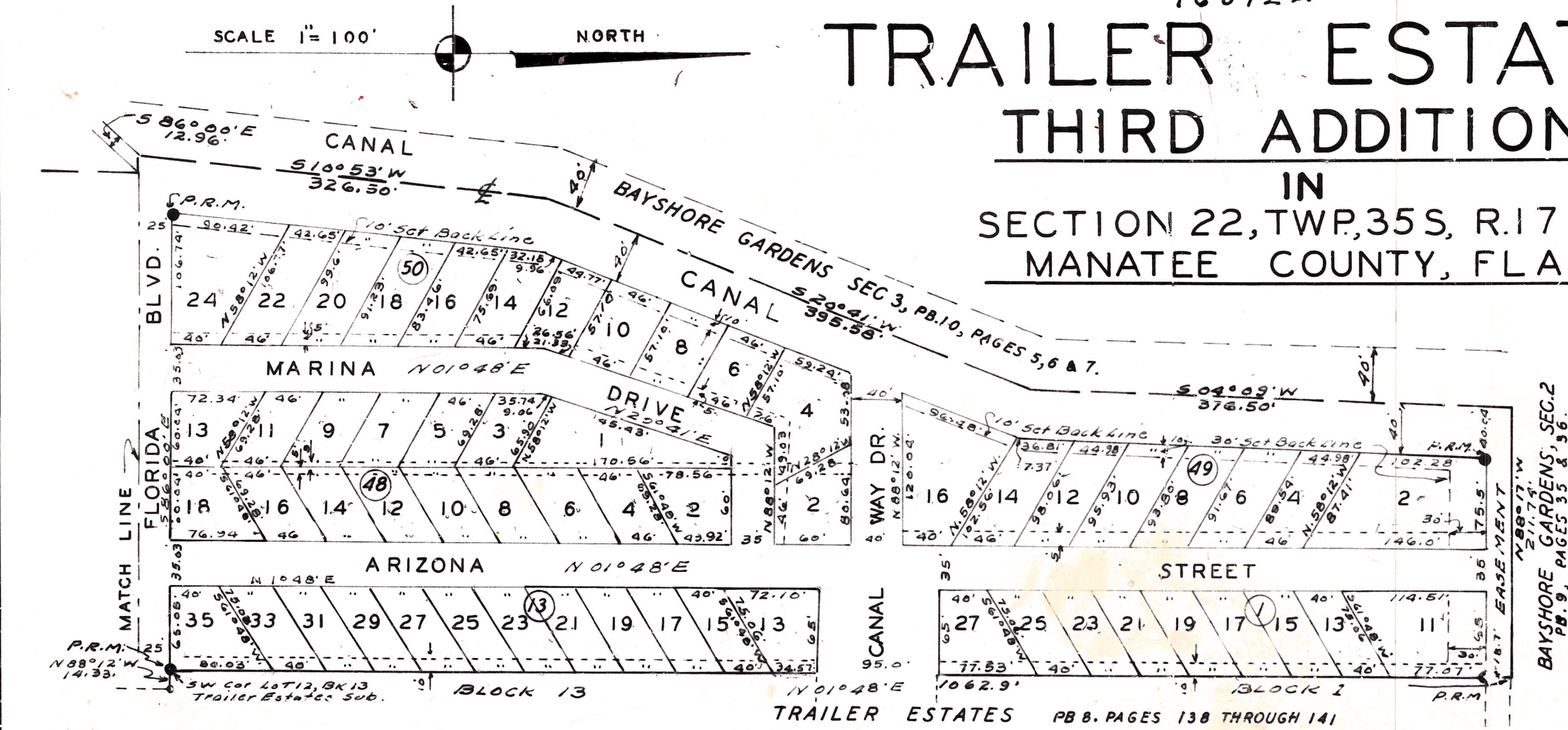
This certifies that this plat has been received and accepted by the Board of County Commissioners of Manatee County Florida, and is eligible for record in this County. The acceptance of this plat shall not be deemed the acceptance of the streets shown hereon for maintenance. Dated this day of Nov. 1956, at Bradenton, Florida.

Chairman Board of County Commissioners

ATTEST:

Lloyd M. Hicks





# TRAILER ESTATES THIRD ADDITION

IN  
SECTION 22, TWP. 35 S, R. 17 E.  
MANATEE COUNTY, FLA.

Book 10 Page 69

### CERTIFICATE OF DEDICATION

STATE OF FLORIDA } SS  
COUNTY OF MANATEE }  
KNOW ALL MEN BY THESE PRESENTS THAT TRAILER ESTATES, INC., A FLORIDA CORPORATION, THE OWNERS OF THE LAND DESCRIBED IN THE DESCRIPTION HERETO AFFIXED BY AND WITH AUTHORITY OF THE BOARD OF DIRECTORS OF THE SAID CORPORATION HAVE CAUSED THE ATTACHED PLAT OF A SUBDIVISION OF THE LAND TO BE MADE, AND DO HEREBY RELINQUISH, RELEASE AND DEDICATE TO THE PUBLIC, FOREVER, ALL OF THE PARKS, PARKWAYS, ROADS, STREETS, AVENUES, BOULEVARDS, HIGHWAYS AND DRIVES, AND ALL CANALS OR BOAT HARBORS SHOWN ON THIS PLAT OF SAID LAND; EXCEPTING AND RESERVING TO GRANTORS, THE AFORESAID CORPORATION AND THEIR SUCCESSORS AND ASSIGNS, THE EXCLUSIVE ASSIGNABLE RIGHT TO CONSTRUCT AND MAINTAIN UTILITIES, INCLUDING, BUT NOT LIMITED TO, WATER, SEWER AND GAS LINES, BENEATH THE SURFACE OF THE ROADS, AND OVERHEAD STREET LIGHT SERVICE LINES.  
IN WITNESS WHEREOF, THE AFORESAID TRAILER ESTATES, INC., HAVE CAUSED THIS INSTRUMENT TO BE EXECUTED IN THEIR NAMES AND THE CORPORATE SEALS OF SAID CORPORATION TO BE AFFIXED THERETO, BY THE DULY AUTHORIZED PRESIDENT OF SAID CORPORATION THIS 16th DAY OF January, 1958.

TRAILER ESTATES, INC.  
BY: Sydney Adler PRESIDENT  
ATTEST: Robert H. Hanesworth ASST. SECRETARY

STATE OF FLORIDA } SS  
COUNTY OF MANATEE }  
BEFORE ME, A NOTARY PUBLIC OF THE STATE OF FLORIDA, PERSONALLY APPEARED SYDNEY ADLER AND ROBERT W. HANESWORTH, KNOWN TO ME TO BE PRESIDENT AND ASST. SECRETARY RESPECTIVELY OF TRAILER ESTATES, INC., A FLORIDA CORPORATION, AND THEY ACKNOWLEDGED BEFORE ME THAT THEY EXECUTED THE ABOVE INSTRUMENT AS THE DULY AUTHORIZED OFFICERS, AND AS THE OFFICIAL ACT AND DEED OF SAID CORPORATION.  
WITNESS MY HAND AND SEAL AT Bradenton THIS 16 DAY OF January, 1958.

Naw T. Browning NOTARY PUBLIC.  
MY COMMISSION EXPIRES March 11, 1960.

### CERTIFICATE OF ENGINEER

I CERTIFY THAT THE PLAT OF THE ABOVE DESCRIBED LANDS IN MANATEE COUNTY, FLORIDA, WAS MADE BY ME, BASED UPON A SURVEY OF SAID PROPERTY MADE BY ME ON July, 1957.  
THE OWNER OR OWNERS OR SUBDIVIDER, SHALL PROVIDE THE STAKING OF ALL LOT CORNERS AND PLACING ALL PERMANENT REFERENCE MONUMENTS AS PROVIDED BY MANATEE COUNTY SUBDIVISION REGULATIONS.  
Freeman H. Horton  
REGISTERED ENGINEER & LAND SURVEYOR.  
CERT. NOS. 268 AND 273.

### CERTIFICATE OF COUNTY COMMISSIONERS

STATE OF FLORIDA } SS  
COUNTY OF MANATEE }  
THIS CERTIFIES THAT THIS PLAT HAS BEEN RECEIVED AND ACCEPTED BY THE BOARD OF COUNTY COMMISSIONERS OF MANATEE COUNTY, FLORIDA, AND IS ELIGIBLE FOR RECORD IN THIS COUNTY.  
THE ACCEPTANCE OF THIS PLAT SHALL NOT BE DEEMED THE ACCEPTANCE OF THE STREETS SHOWN HEREON, FOR MAINTENANCE.  
DATED THIS 10 DAY OF MARCH, 1958 AT BRADENTON FLORIDA.

John S. Jones CHAIRMAN  
BOARD OF COUNTY COMMISSIONERS.

ATTEST: Bruce M. Cox DEPUTY CLERK OF CIRCUIT COURT.

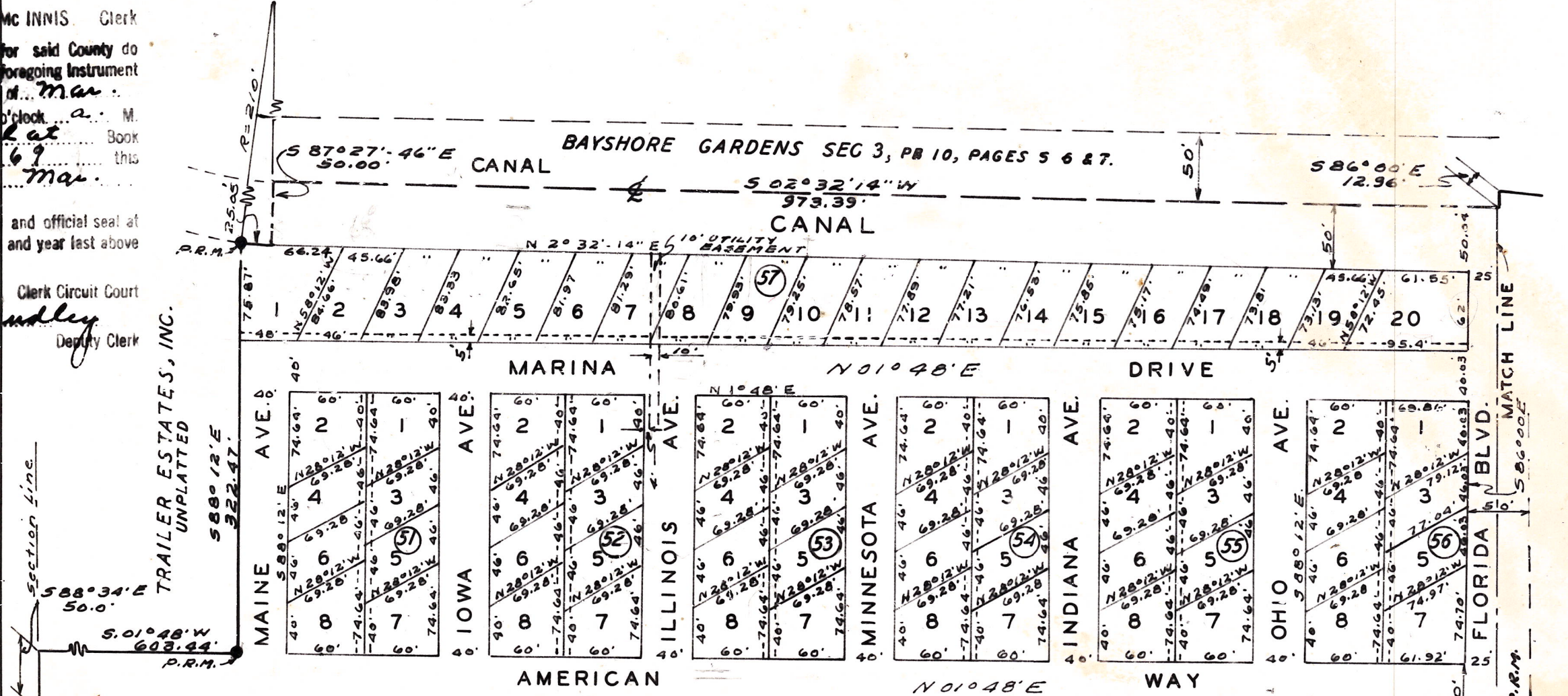
### CERTIFICATE OF COUNTY CLERK

STATE OF FLORIDA } SS  
COUNTY OF MANATEE }  
I, M.T. McINNIS, CLERK OF THE CIRCUIT COURT OF MANATEE COUNTY, FLORIDA, HEREBY CERTIFY THAT I HAVE EXAMINED THIS PLAT AND I CERTIFY THAT IT COMPLIES IN FORM WITH ALL REQUIREMENTS FOR MAKING PLATS AND SURVEYS, AND THE FILING OF THE SAME FOR RECORD.  
WITNESS MY HAND AND OFFICIAL SEAL AT BRADENTON, FLORIDA, THIS 10 DAY OF March, 1958.

M. T. McInnis CLERK OF THE CIRCUIT COURT.

NOTE:  
UNLESS OTHERWISE SHOWN, ALL LOTS SHALL HAVE EASEMENTS 5 FEET WIDE ALONG REAR OF LOT AND 2 FEET WIDE ALONG EACH SIDE OF LOT.

State of Florida }  
Manatee County }  
Circuit Court in and for said County do hereby certify that the foregoing instrument was filed the 10 day of March, 1958 at 10:30 o'clock A.M. and recorded in Book 10 page 69 this 11 day of March, 1958.  
Witness my hand and official seal at Bradenton, Fla., the day and year last above written.  
M. T. McINNIS Clerk Circuit Court  
By Bruce M. Cox Deputy Clerk



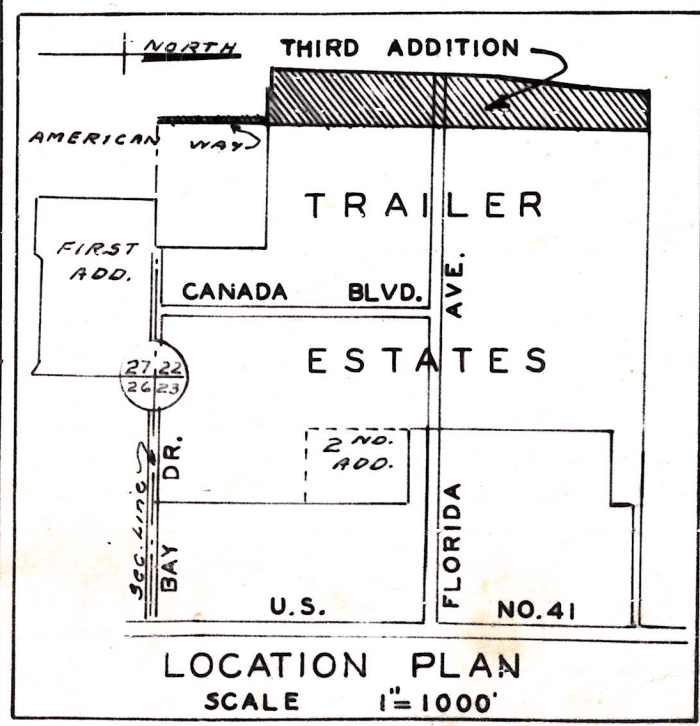
DESCRIPTION  
FROM THE SE CORNER OF SEC. 22, TWP. 35 S, R. 17 E, MANATEE COUNTY, FLORIDA, RUN N 88° 34' W, 1323.67 FEET TO THE POINT OF BEGINNING; THENCE RUN N 1° 48' E, 910.00 FEET TO THE SW CORNER OF LOT 1, BLK. 34, TRAILER ESTATES SUB. AS PER PLAT RECORDED IN PLAT BOOK 8, PAGES 138 THROUGH 141, PUBLIC RECORDS OF MANATEE COUNTY, FLORIDA; THENCE CONTINUE N 1° 48' E, 910.00 FEET TO POINT ON NORTH LINE OF FLORIDA BLVD. 50 FEET WIDE; THENCE RUN N 88° 12' W, 14.33 FEET TO THE SW CORNER OF LOT 12, BLK. 13, OF SAID TRAILER ESTATES SUB.; THENCE RUN N 1° 48' E, 1062.90 FEET TO THE SW CORNER OF LOT 12, BLK. 13, OF SAID TRAILER ESTATES SUB.; THENCE RUN N 1° 48' E, 1062.90 FEET TO POINT ON SOUTH LINE OF BAYSHORE GARDENS SUB. SECTION 2, AS RECORDED IN PLAT BOOK 9, PAGES 35 AND 36, PUBLIC RECORDS OF MANATEE COUNTY, FLORIDA; THENCE ALONG SOUTH LINE OF SAID BAYSHORE GARDENS SUB. SECTION 2, RUN N 88° 17' W, 211.74 FEET TO POINT ON CENTERLINE OF CANAL (80 FEET WIDE) AS PER PLAT OF BAYSHORE GARDENS SUB. SECTION 3, RECORDED IN PLAT BOOK 10, PAGES 5, 6 AND 7, PUBLIC RECORDS OF MANATEE COUNTY, FLORIDA; THENCE ON CENTERLINE OF SAID CANAL, RUN S 4° 09' W, 376.50 FEET; THENCE RUN S 20° 41' W, 395.58 FEET; THENCE RUN S 10° 53' W, 326.50 FEET; THENCE RUN S 86° 00' E, 12.96 FEET TO A POINT ON CENTERLINE OF CANAL, (100 FEET WIDE); THENCE ON CENTERLINE OF SAID CANAL, RUN S 2° 32' 14" W, 973.39 FEET; THENCE RUN S 87° 27' 46" E, 50.00 FEET TO POINT ON EAST LINE OF SAID CANAL, SAID POINT BEING THE R.C. OF A CURVE, CURVING RIGHT, HAVING A RADIUS OF 210 FEET; THENCE ALONG CURVE, RUN THROUGH A CENTRAL ANGLE OF 6° 50', ARC DISTANCE OF 25.05 FEET; THENCE RUN S 88° 12' E, 322.47 FEET; THENCE RUN S 1° 48' W, 603.44 FEET TO SOUTH LINE OF SAID SECTION 22; THENCE ALONG SECTION LINE, RUN S 88° 34' E, 50.00 FEET TO THE POINT OF BEGINNING.

### CERTIFICATE OF ZONING COMMISSION

THIS CERTIFIES THAT THIS PLAT HAS BEEN APPROVED BY THE MANATEE COUNTY PLANNING AND ZONING COMMISSION AND THAT ALL REQUIREMENTS OF THE 1955 MANATEE COUNTY PLANNING AND ZONING LAW HAVE BEEN COMPLIED WITH.  
DATED THIS 1 DAY OF March, 1958, AT BRADENTON FLORIDA.

Chas. D. Hess Director  
CHAIRMAN  
MANATEE COUNTY PLANNING AND ZONING COMMISSION

LEGEND:  
DRAINAGE AND UTILITY EASEMENTS SHOWN THUS -----  
PERMANENT REFERENCE MONUMENTS SHOWN THUS ●





# TRAILER ESTATES

## FOURTH ADDITION

IN  
SECTION 22, TWP. 35 S. R17 E.  
MANATEE COUNTY, FLORIDA.

ACKNOWLEDGMENT

Book 11 Page 66

STATE OF FLORIDA }  
COUNTY OF MANATEE } SS

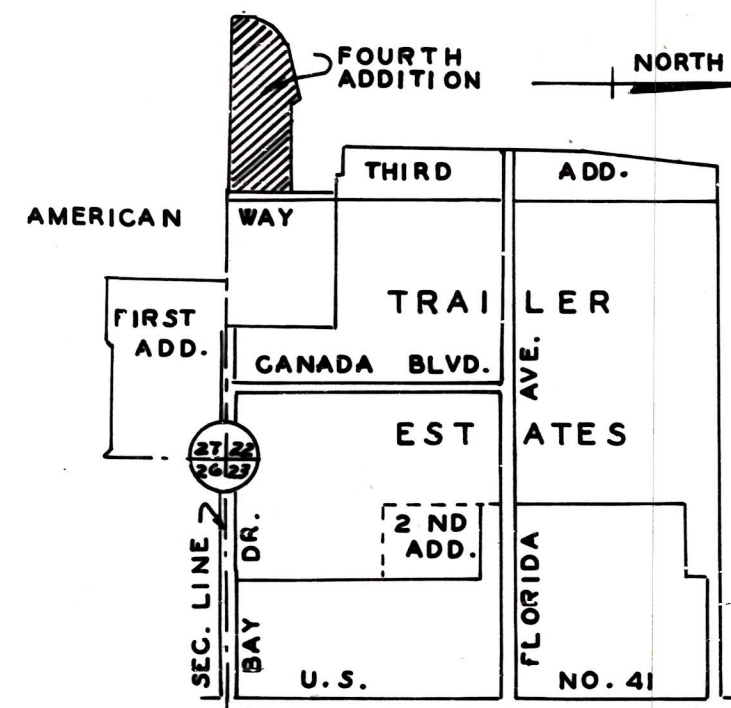
BEFORE ME, A NOTARY PUBLIC OF THE STATE OF FLORIDA, PERSONALLY APPEARED RICHARD MORTON, KNOWN TO BE PRESIDENT OF SARAPAL CORPORATION, SOTABRADEN CORPORATION AND TAMASOTA CORPORATION, AND THEODORE W. NASS, KNOWN TO BE VICE-PRESIDENT OF SUNCOAST REALTY COMPANY INC. ALL FLORIDA CORPORATIONS, AND THEY ACKNOWLEDGED BEFORE ME THAT THEY EXECUTED THE INSTRUMENT AS THE DULY AUTHORIZED OFFICERS AND AS THE OFFICIAL ACT AND DEED OF SAID CORPORATIONS.

WITNESS MY HAND AND SEAL AT BRADENTON, FLA. THIS 8 DAY OF APRIL 1959.  
MY COMMISSION EXPIRES 04-1-1961

Mary Zavalyn  
NOTARY PUBLIC

### DESCRIPTION

FROM THE SE. CORNER OF SECTION 22, TWP. 35 S. R17 E., MANATEE COUNTY, FLORIDA. RUN N 88° 34' W, A DISTANCE OF 1373.67 FEET, TO A POINT ON THE WEST R/W LINE OF AMERICAN WAY (50 FEET WIDE), MARKING THE SW. CORNER OF TRAILER ESTATES THIRD ADDITION AS PER PLAT RECORDED IN P.B. 10, PAGE 69 PUBLIC RECORDS OF MANATEE COUNTY, FLORIDA. SAID POINT BEING THE POINT OF BEGINNING. THENCE, RUN N 88° 34' W, 951.81 FEET, TO A POINT ON THE E. OF A CANAL, (120 FEET WIDE), THENCE, ALONG THE E. OF SAID CANAL, RUN N 3° 31' 07" E, 205.42 FEET TO THE P.C. OF A CURVE, CURVING RIGHT, THENCE, ALONG SAID CURVE HAVING A RADIUS OF 250 FEET, RUN THROUGH A CENTRAL ANGLE OF 79° 31' 20", AN ARC DISTANCE OF 346.98 FEET TO THE P.T. OF SAID CURVE, THENCE, RUN N 83° 08' 27" E, 229.12 FEET, THENCE, RUN S 6° 51' 33" E, 150.74 FEET, THENCE, RUN S 88° 34' E, 483.84 FEET TO A POINT ON THE WEST R/W LINE OF AMERICAN WAY (50 FEET WIDE), THENCE, RUN ALONG THE WEST R/W LINE OF AMERICAN WAY, RUN S 1° 48' W, 327.01 FEET TO THE POINT OF BEGINNING.



LOCATION PLAN  
SCALE: 1"=1000'

### CERTIFICATE OF DEDICATION (BY MORTGAGEE)

STATE OF FLORIDA  
COUNTY OF MANATEE

KNOW ALL MEN BY THESE PRESENTS THAT SYDNEY R. NEWMAN, SUNCOAST REALTY CO. INC., SARAPAL CORPORATION, SOTABRADEN CORP., TAMASOTA CORP., FLORIDA CORPORATIONS, HOLDERS OF MORTGAGES AGAINST SAID LANDS AND DO HEREBY CONSENT AND JOIN IN THE SAID CERTIFICATE OF DEDICATION WITH THE OWNERS FOR THE REASONS AND PURPOSES RECITED THEREIN.

(SEAL BELOW) SUNCOAST REALTY CO. INC.  
By Theodore W. Nass  
Vice President.

(SEAL BELOW) SARAPAL CORPORATION  
By Richard Morton  
President.

(SEAL BELOW) SOTABRADEN CORPORATION.  
By Richard Morton  
President.

(SEAL BELOW) TAMASOTA CORPORATION.  
By Richard Morton  
President.

WITNESSES TO  
SYDNEY R. NEWMAN.

Gillian Engel  
James Higgins

STATE OF NEW YORK  
COUNTY OF NEW YORK

BEFORE ME PERSONALLY APPEARED SYDNEY R. NEWMAN, TO ME WELL KNOWN TO BE THE PERSON WHO EXECUTED THE FOREGOING INSTRUMENT, AND WHO, BEING DULY SWORN, ACKNOWLEDGED THAT HE EXECUTED THE SAME FREELY AND VOLUNTARILY FOR THE PURPOSE HEREIN SET FORTH.

WITNESS MY HAND AND SEAL AT New York  
THIS 13 DAY OF April, 1959.

Marie A. Bak NOTARY PUBLIC  
MY COMMISSION EXPIRES March 30, 1960

Notary of Manatee County, M. T. McINNIS Clerk  
Circuit Court in and for said County do hereby certify that the foregoing instrument was filed the 22 day of April 1959 at 12:29 o'clock P.M. and recorded in Plat Book 11, page 66, this 24 day of April 1959.  
Witness my hand and official seal at Bradenton, Fla., the day and year last above written.  
M. T. McINNIS Clerk Circuit Court  
By Lee M. Rudley Deputy Clerk

### CERTIFICATE OF ZONING COMMISSION

THIS CERTIFIES THAT THIS PLAT HAS BEEN APPROVED BY THE MANATEE COUNTY PLANNING AND ZONING COMMISSION AND THAT ALL REQUIREMENTS OF THE 1955 MANATEE COUNTY PLANNING AND ZONING LAWS HAVE BEEN COMPLIED WITH.  
DATED THIS 24 DAY OF April, 1959, AT BRADENTON, FLORIDA.

Charles H. Deas Director  
CHAIRMAN  
MANATEE COUNTY PLANNING & ZONING COMMISSION

### CERTIFICATE OF COUNTY CLERK

STATE OF FLORIDA }  
COUNTY OF MANATEE } SS

I, M. T. McINNIS, CLERK OF THE CIRCUIT COURT OF MANATEE COUNTY, FLORIDA, HEREBY CERTIFY THAT I HAVE EXAMINED THIS PLAT AND I CERTIFY THAT IT COMPLIES IN FORM WITH ALL REQUIREMENTS FOR MAKING PLATS AND SURVEYS, AND THE FILING OF THE SAME FOR RECORD.

WITNESS MY HAND AND OFFICIAL SEAL AT BRADENTON, FLORIDA, THIS 22 DAY OF April, 1959.

M. T. McINNIS  
CLERK OF CIRCUIT COURT

### CERTIFICATE OF DEDICATION

STATE OF FLORIDA }  
COUNTY OF MANATEE } SS

KNOW ALL MEN BY THESE PRESENTS THAT T. E. INC., A FLORIDA CORPORATION, THE OWNERS OF THE LAND DESCRIBED IN THE DESCRIPTION HERETO AFFIXED BY AND WITH AUTHORITY OF THE BOARD OF DIRECTORS OF THE SAID CORPORATION HAVE CAUSED THE ATTACHED PLAT OF A SUBDIVISION OF THE LAND TO BE MADE, AND DO HEREBY RELINQUISH, RELEASE AND DEDICATE TO THE PUBLIC, FOREVER, ALL OF THE PARKS, PARKWAYS, ROADS, STREETS, AVENUES, BOULEVARDS, DRIVES, AND ALL CANAL EASEMENT SHOWN ON THIS PLAT OF SAID LAND, EXCEPTING AND RESERVING TO GRANTORS, THE AFORESAID CORPORATION AND THEIR SUCCESSORS AND ASSIGNS, THE EXCLUSIVE ASSIGNABLE RIGHT TO CONSTRUCT AND MAINTAIN UTILITIES, INCLUDING, BUT NOT LIMITED TO WATER, SEWER AND GAS LINES, BENEATH THE ABOVE MENTIONED EASEMENTS, AND OVERHEAD STREET LIGHT SERVICE LINES.

IN WITNESS WHEREOF, THE AFORESAID T. E. INC. HAVE CAUSED THIS INSTRUMENT TO BE EXECUTED IN THEIR NAMES AND THE CORPORATE SEAL OF SAID CORPORATION TO BE AFFIXED THERETO, BY THE DULY AUTHORIZED PRESIDENT OF SAID CORPORATION THIS 2nd DAY OF February 1959.

T. E. INCORPORATED.  
BY: Sydney Adler PRESIDENT.  
ATTEST: Charles H. Ehrman ASST. SECRETARY.

STATE OF FLORIDA  
COUNTY OF MANATEE

BEFORE ME, A NOTARY PUBLIC OF THE STATE OF FLORIDA, PERSONALLY APPEARED SYDNEY ADLER AND CHARLES EHRLMAN, KNOWN TO ME TO BE PRESIDENT AND ASST. SECRETARY RESPECTIVELY OF T. E. INC., A FLORIDA CORPORATION, AND THEY ACKNOWLEDGED BEFORE ME THAT THEY EXECUTED THE INSTRUMENT AS THE DULY AUTHORIZED OFFICERS AND AS THE OFFICIAL ACT AND DEED OF SAID CORPORATION.

WITNESS MY HAND AND SEAL AT Bradenton THIS 2nd DAY OF February 1959.

Nan A. Browning NOTARY PUBLIC.  
MY COMMISSION EXPIRES March 11, 1960

### CERTIFICATE OF ENGINEER

I CERTIFY THAT THE PLAT OF THE ABOVE DESCRIBED LANDS IN MANATEE COUNTY, FLORIDA WAS MADE BY ME, BASED UPON A SURVEY OF SAID PROPERTY MADE BY ME ON OCTOBER 14, 1958.

THE OWNER OR OWNERS, OR SUBDIVIDER, SHALL PROVIDE THE STAKING OF ALL LOT CORNERS AND PLACING ALL PERMANENT REFERENCE MONUMENTS AS PROVIDED BY MANATEE COUNTY SUBDIVISION REGULATIONS.

Freeman H. Horton  
REGISTERED ENGINEER & LAND SURVEYOR.  
CERT. NO'S. 268 & 273

### CERTIFICATE OF COUNTY COMMISSIONERS

STATE OF FLORIDA }  
COUNTY OF MANATEE } SS

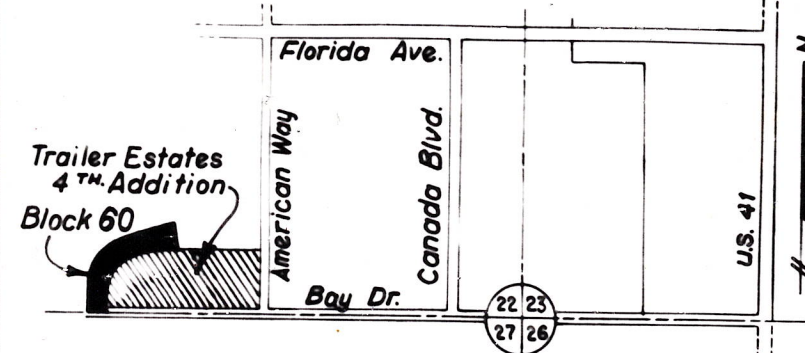
THIS CERTIFIES THAT THIS PLAT HAS BEEN RECEIVED AND ACCEPTED BY THE BOARD OF COUNTY COMMISSIONERS OF MANATEE COUNTY, FLORIDA, AND IS ELIGIBLE FOR RECORD IN THIS COUNTY.

THE ACCEPTANCE OF THIS PLAT SHALL NOT BE DEEMED THE ACCEPTANCE OF THE STREETS SHOWN HEREON, FOR MAINTENANCE.  
DATED THIS 22 DAY OF April, 1959, AT BRADENTON, FLORIDA.

W. S. Slattery CHAIRMAN  
BOARD OF COUNTY COMMISSIONERS.

ATTEST: Bruce M. Cox DEPUTY CLERK OF CIRCUIT COURT.





LOCATION MAP  
Scale 1"=1000'

DESCRIPTION

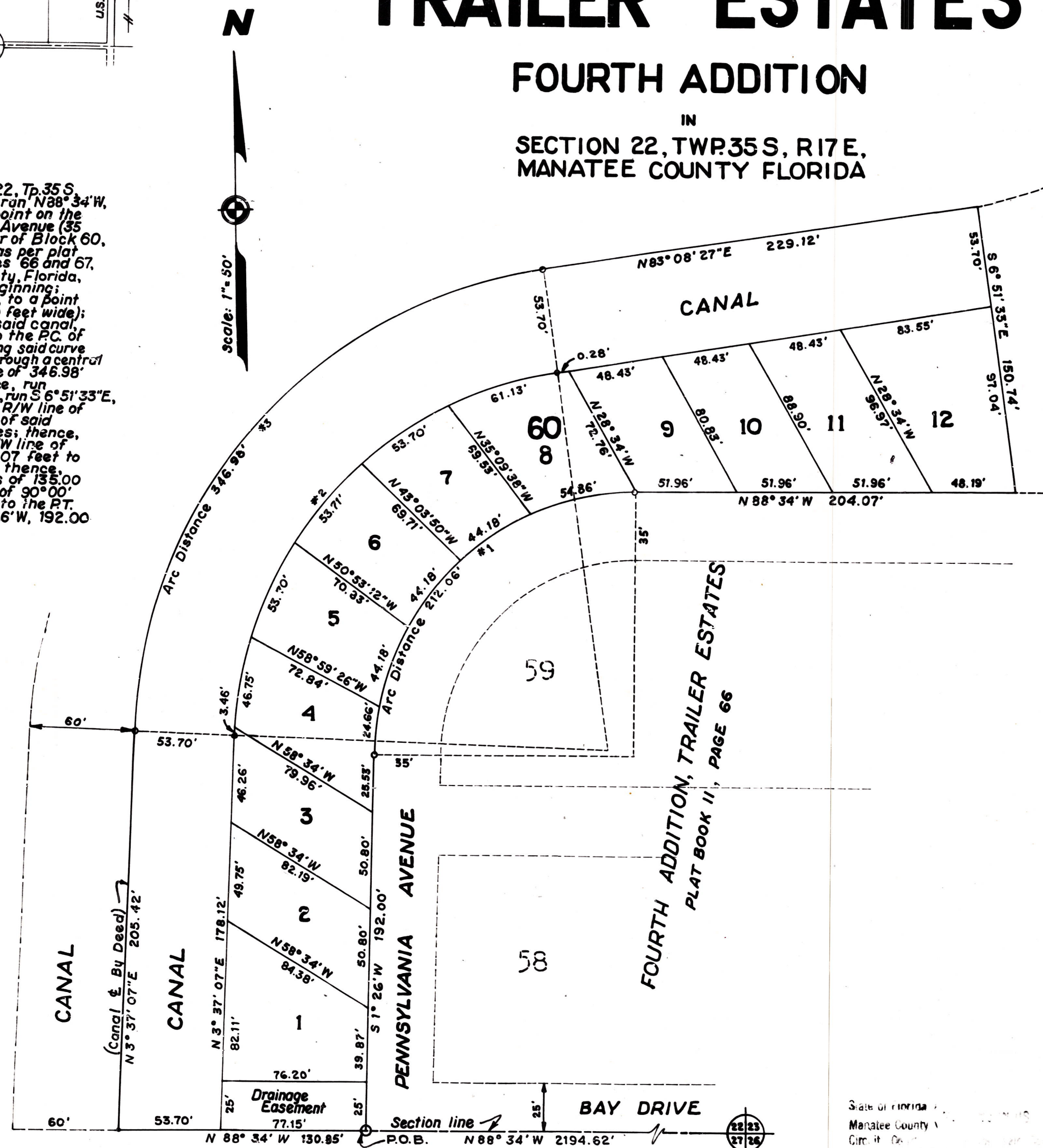
From the SE corner of Section 22, Tp. 35 S, R. 17 E, Manatee County, Florida, run N88°34'W, a distance of 2194.62 feet, to a point on the West R/W line of Pennsylvania Avenue (35 feet wide) marking the S.E. corner of Block 60, Trailer Estates, 4<sup>th</sup> Addition, as per plat recorded in Plat Book 11, pages 66 and 67, Public Records of Manatee County, Florida, said point being the Point of Beginning; thence, run N88°34'W, 130.85 feet, to a point of the center line of a canal (120 feet wide); thence, along the center line of said canal, run N3°37'07"E, 205.42 feet to the P.C. of a curve, curving right; thence, along said curve having a radius of 250 feet, run through a central angle of 79°31'20" an arc distance of 346.98 feet to the P.T. of said curve; thence, run N83°08'27"E, 229.12 feet; thence, run S6°51'33"E, 150.74 feet to a point on the North R/W line of Pennsylvania Avenue as per plat of said Fourth Addition to Trailer Estates; thence, run N88°34'W, along the North R/W line of said Pennsylvania Avenue 204.07 feet to the P.C. of a curve, curving left; thence, along said curve having a radius of 135.00 feet, run through a central angle of 90°00' an arc distance of 212.06 feet to the P.T. of said curve; thence, run S1°26'W, 192.00 feet to the Point of Beginning.

CURVE DATA

Curve No. 1  
Δ = 90°00'  
R = 135'  
T = 135'  
L = 212.06'

Curve No. 2  
Δ = 79°31'20"  
R = 196.30'  
T = 163.33'  
L = 272.45'

Curve No. 3  
Δ = 79°31'20"  
R = 250'  
T = 208.00'  
L = 346.98'



# REPLAT OF BLOCK 60 TRAILER ESTATES

## FOURTH ADDITION

IN  
SECTION 22, TWP 35 S, R 17 E,  
MANATEE COUNTY FLORIDA

CERTIFICATE OF DEDICATION

Know all men by these presents that T.E. INC., a Florida Corporation, the owner of the land described in the description hereto, affixed, by and with authority of the Board of Directors of said Corporation, have caused the attached Plat of a Subdivision of the land to be made, and do hereby relinquish, release, and dedicate to the public forever all of the parks, parkways, roads, streets, avenues, boulevards, drives, and all canal easements shown on this Plat of said land; excepting and reserving to grantors, the aforesaid Corporation and their successors and assigns, the exclusive assignable right to construct and maintain utilities, including but not limited to, water, sewer and gas lines, beneath the above mentioned easements, and overhead street light service lines.

In witness whereof, the aforesaid T.E. INC. have caused this Instrument to be executed in their names and the Corporate Seal of said Corporation to be affixed thereto, by the duly authorized President of said Corporation, this 7 day of July, 1966.

T.E. INC.

By Sydney Adler  
President

ATTEST: Charles F. Ehrman  
Asst. Secretary

State of Florida } ss  
County of Manatee }

Before me, a Notary Public of the State of Florida, personally appeared Sydney Adler and Charles Ehrman, known by me to be President and Asst. Secretary respectively of T.E. INC., a Florida Corporation, and they acknowledged before me that they executed the above instrument as the duly authorized officials and as the official act and deed of said Corporation.

Witness my hand and Seal at Bradenton, this 7 day of July, 1966.

Marguerite Smith  
Notary Public

My Commission expires January 29, 1964.

CERTIFICATE OF ENGINEER

I certify that this Plat of above described lands in Manatee County, Florida, was made by me, based upon a Survey of said property, made by me on Feb. 10, 1966.  
The owner or owners, or subdivider, shall provide the staking of all lot corners and placing all Permanent Reference Monuments as provided by Manatee County Subdivision Regulations.

William H. Horton  
Registered Engineer & Land Surveyor  
State of Florida: Cert. No's. 268 & 273.

CERTIFICATE OF COUNTY COMMISSIONERS

State of Florida } ss  
County of Manatee }

This certifies that this Plat has been received and accepted by the Board of County Commissioners of Manatee County, Florida and is eligible for record in this County.  
The acceptance of this Plat shall not be deemed the acceptance of the streets shown hereon for maintenance.  
Dated this 22 day of August, 1966, at Bradenton, Florida.

Tom W. Jennings  
Chairman  
Board of County Commissioners

ATTEST: James M. Col  
Clerk of the Circuit Court

CERTIFICATE OF COUNTY CLERK

State of Florida } ss  
County of Manatee }

I, M.T. McInnis, Clerk of the Circuit Court of Manatee County, Florida, hereby certify that I have examined this Plat, and I certify that it complies in form with all requirements for making Plats and Surveys and filing of the same for record.  
Witness my hand and official Seal at Bradenton, Florida, this 25 day of Aug., 1966.

M. T. McInnis  
Clerk of the Circuit Court

CERTIFICATE OF ZONING COMMISSION

This certifies that this Plat has been approved by the Manatee County Planning and Zoning Commission, and that all requirements of the 1955 Manatee County Planning and Zoning Law have been complied with.  
Dated this 19 day of August, 1966, at Bradenton, Florida.

Chas. H. News  
Director  
Manatee County Planning and Zoning Commission

State of Florida } ss  
Manatee County }  
Circuit Court }  
I, M.T. McInnis, Clerk of the Circuit Court of Manatee County, Florida, hereby certify that I have examined this Plat, and I certify that it complies in form with all requirements for making Plats and Surveys and filing of the same for record.  
Witness my hand and official Seal at Bradenton, Florida, this 25 day of Aug., 1966.  
M. T. McInnis  
Clerk of the Circuit Court



CURVE DATA

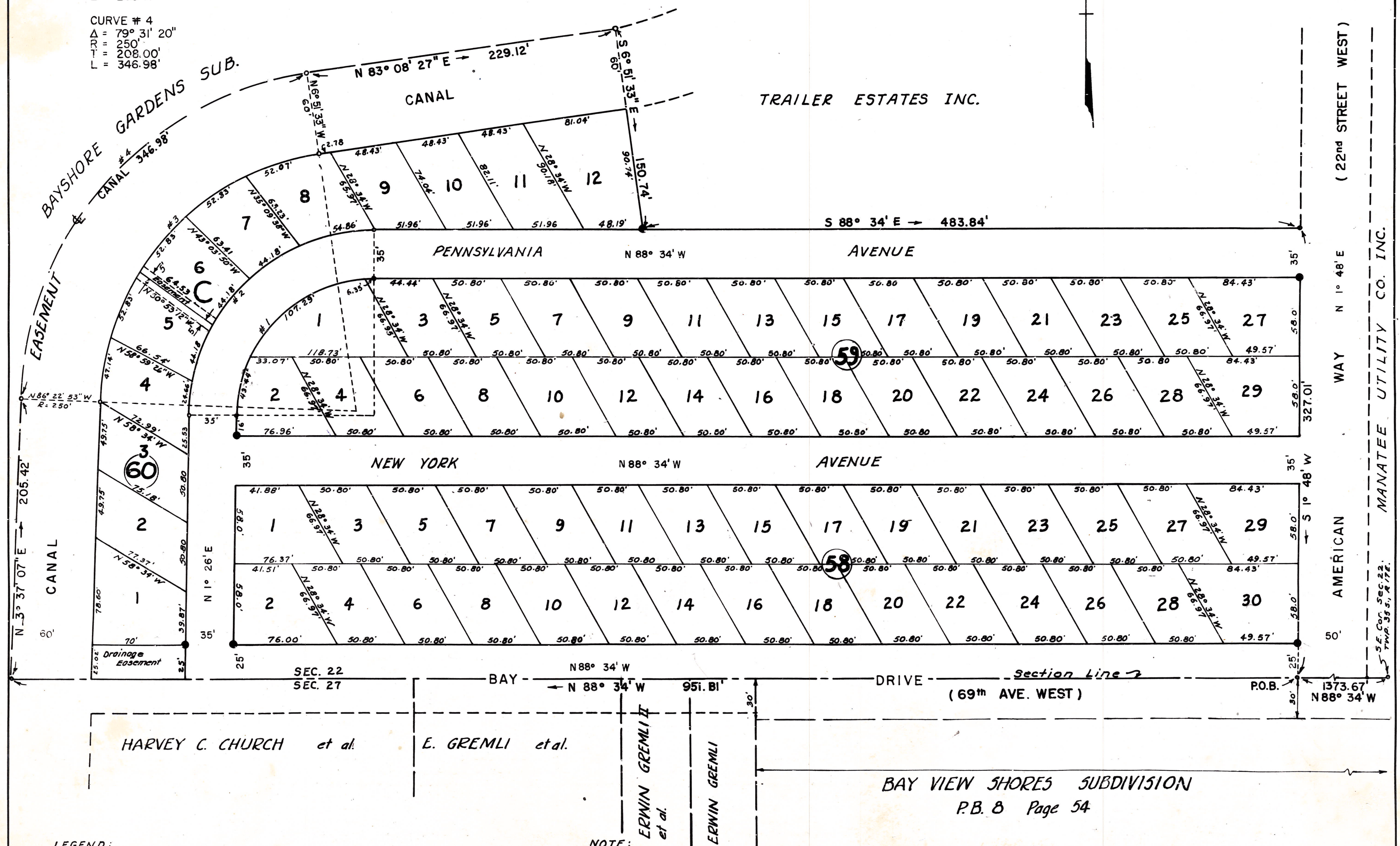
- CURVE #1  
Δ = 90°  
R = 100'  
T = 100'  
L = 157.08
- CURVE #2  
Δ = 90°  
R = 135'  
T = 135'  
L = 212.06
- CURVE #3  
Δ = 79° 31' 20"  
R = 190'  
T = 158.08'  
L = 263.71'
- CURVE #4  
Δ = 79° 31' 20"  
R = 250'  
T = 208.00'  
L = 346.98'

# TRAILER ESTATES

## FOURTH ADDITION

IN  
SECTION 22, TWP. 35S, R17E.  
MANATEE COUNTY, FLORIDA.

SCALE: 1" = 50'



LEGEND:  
Permanent Reference Monument shown thus ●

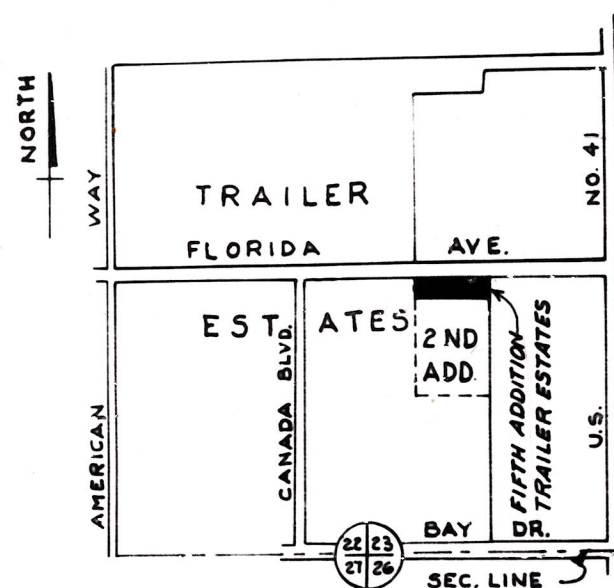
NOTE:  
Unless otherwise shown, all lots shall have Easements 5 feet wide along rear of lots and 2 feet wide along each side of lot.



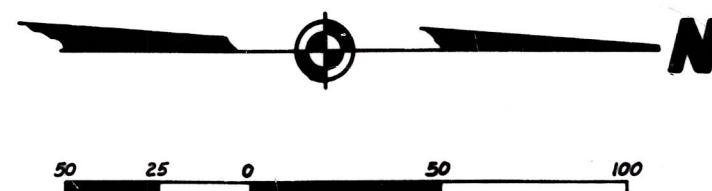
# TRAILER ESTATES FIFTH ADDITION

LYING IN

SECTION 23, TWP. 35S., R17E.  
MANATEE COUNTY FLORIDA



LOCATION MAP  
SCALE 1" = 1000'



## DESCRIPTION

A tract of land lying in the SW 1/4 of Section 23, Twp. 35S., R17E., Manatee County, Florida, described as follows:  
From the NE corner of lot 25 of Block 25, Trailer Estates, as per Plat recorded in Plat Book 8, page 138, Public Records of Manatee County, Florida, run S 88° 44' E, along the South line of Florida Boulevard, (50 feet wide), formerly known as Esfres Road, a distance of 25.00 feet to a point, said point being the Point of Beginning; Thence continue S 88° 44' E, along the South R/W line of said Florida Boulevard (50 feet wide), 403.00 feet to the NW corner of lands previously conveyed; Thence, run S 1° 15' W along the West boundary of land previously conveyed, 121.34 feet to the North R/W line of Ohio Avenue as per Plat of Second Addition to Trailer Estates recorded in Plat Book 9, page 61, Public Records of Manatee County, Florida; thence, along the North R/W line of said Ohio Avenue run N 88° 12' W, 403.00 feet to a point; thence, run N 1° 15' E, 117.53 feet to the Point of Beginning.

## LEGEND

Easements for Utilities and Drainage are shown by broken lines, thus .  
Building Clearance Lines are shown by dash lines, thus .  
Permanent Reference Monuments shown thus, P.R.M.

## CERTIFICATE OF ZONING COMMISSION

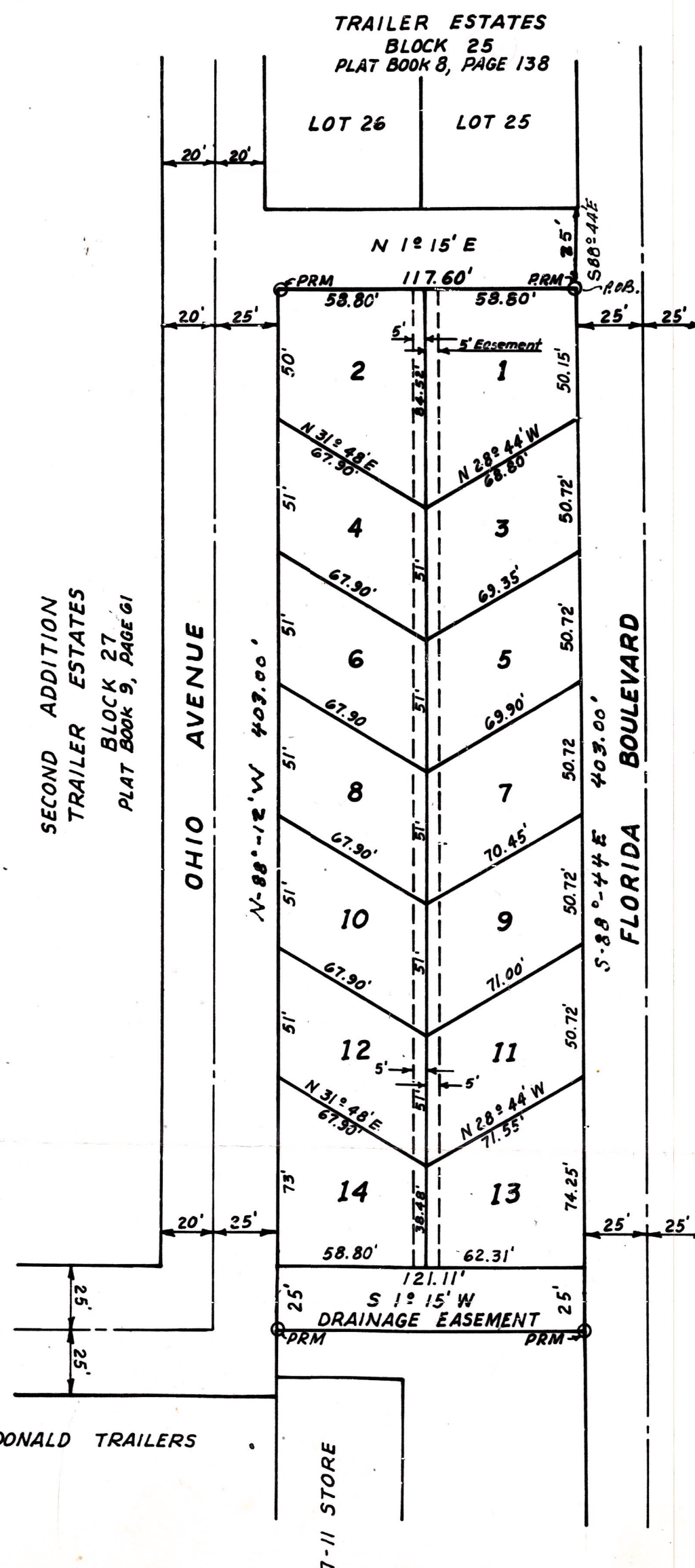
This certifies that this Plat has been approved by the Manatee County Planning and Zoning Commission, and that all requirements of the 1955 Manatee County Planning and Zoning Law have been complied with.  
Dated this 5th day of May, 1960, at Bradenton, Fla.

Chas. H. Jones  
Director  
Manatee County Planning and Zoning Commission

## CERTIFICATE OF COUNTY COMMISSIONERS

State of Florida } ss  
County of Manatee }  
This certifies that this Plat has been received and accepted by the Board of County Commissioners of Manatee County, Florida and is eligible for record in this County.  
The acceptance of this Plat shall not be deemed the acceptance of the streets shown hereon for maintenance.  
Dated this 9th day of May, 1960, at Bradenton, Fla.

ATTEST:   
Clerk of the Circuit Court



MCDONALD TRAILERS

## CERTIFICATE OF DEDICATION

State of Florida } ss  
County of Manatee }

Know all men by these presents that Tamiami Development Corp., a Florida Corporation, the owner of the land described in the description hereto affixed by and with authority of the Board of Directors of the said Corporation have caused the attached Plat of a Subdivision of the land to be made, and do hereby relinquish, release and dedicate to the Public, forever, all of the Parks, Parkways, Roads, Streets, Avenues, Boulevards, Drives, and all Drainage Easements shown on this Plat of said land, excepting and reserving to Grantors the aforesaid Corporation and their successors and assigns, the exclusive assignable right to construct and maintain utilities, including, but limited to, Water, Sewer and Gas lines beneath the above mentioned Easements, and overhead street light Service lines.

In witness whereof, the aforesaid Tamiami Development Corporation have caused this instrument to be executed in their names and the Corporate Seal of said Corporation to be affixed thereto, by the duly authorized President of said Corporation this 12th day of April, 1960.

By   
President  
ATTEST   
Secretary

State of Florida } ss  
County of Manatee }

Before me, a Notary Public of the State of Florida, personally appeared Franklin E. McDonald and John R. McDonald, known to me to be President and Secretary, respectively of Tamiami Development Corp., a Florida Corporation, and they acknowledged before that they executed the instrument as the duly authorized officers and as the official act and deed of said Corporation.

Witness my hand and Seal of Bradenton, this 12th day of April, 1960.  
  
Notary Public

My Commission expires May 6, 1963.

## CERTIFICATE OF DEDICATION (BY MORTGAGEE)

Know all men by these presents that the First National Bank of Bradenton, Florida, the holder of a Mortgage against said lands, do hereby consent and join in the said Certificate of Dedication with the owners for the reasons and purposes recited therein.

FIRST NATIONAL BANK  
BRADENTON, FLORIDA  
By   
Exec. Vice President  
ATTEST:   
Cashier

State of Florida } ss  
County of Manatee }

Before me a Notary Public of the State of Florida, personally appeared Markland Gaines and Victor Cavanaugh known to me to be Vice President and Cashier respectively of the First National Bank of Bradenton, Florida, and they acknowledged before me that they executed the foregoing instrument as the duly authorized officers of said First National Bank of Bradenton, Florida.

Witness my hand and Seal of Bradenton, this 18th day of March, 1960.  
  
Notary Public  
My Commission expires Aug. 12, 1963.

## CERTIFICATE OF ENGINEER

I certify that this Plat of above described land in Manatee County Florida, was made by me, based upon a Survey of said property, made by me on the 2nd day of September, 1959.  
The owner or owners, or subdivider, shall provide the staking of all lot corners and placing of all Permanent Reference Monuments as provided by Manatee County Subdivision Regulations.

Registered Engineer & Land Surveyor  
State of Florida: Cert. No's 263 & 273

## CERTIFICATE OF COUNTY CLERK

State of Florida } ss  
County of Manatee }

I, M. T. McInnis, Clerk of the Circuit Court of Manatee County, Florida hereby certify that I have examined this Plat, and I certify that it complies in form with all requirements for making Plats and Surveys and filing of same for record.  
Witness my hand and Seal of Bradenton, Florida, this 10th day of May, 1960.

Clerk of the Circuit Court

State of Florida } ss  
County of Manatee }  
M. T. McInnis, Clerk of the Circuit Court of Manatee County, Florida hereby certify that I have examined this Plat, and I certify that it complies in form with all requirements for making Plats and Surveys and filing of same for record.  
Witness my hand and Seal of Bradenton, Florida, this 10th day of May, 1960.  
  
Clerk of the Circuit Court



810827

# AMERICAN PARK

Book 21 page 13

A SUBDIVISION IN THE SW  $\frac{1}{4}$  OF THE SE  $\frac{1}{4}$  OF THE SE  $\frac{1}{4}$   
OF SECTION 22, TWP. 35 S., RGE. 17 E.  
MANATEE COUNTY, FLORIDA

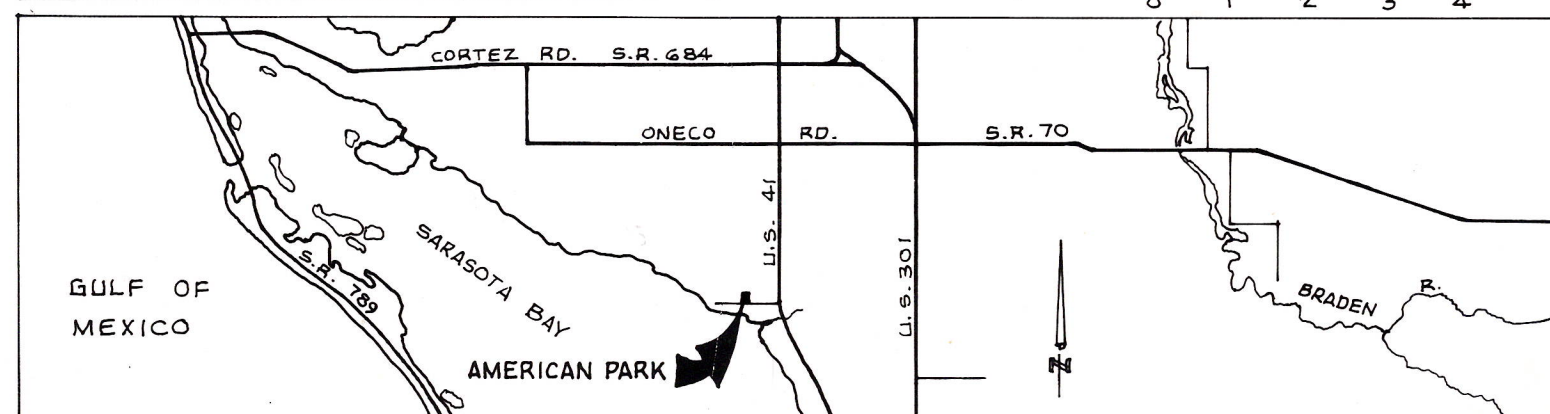
## LEGAL DESCRIPTION

COMMENCE AT THE SE. CORNER OF SEC. 22, TWP. 35 S., RGE. 17 E.; THENCE S89°38'00"W, ALONG THE SOUTH LINE OF SAID SECTION 22, 1323.00 FT. TO THE INTERSECTION WITH THE SOUTHERLY EXTENSION OF THE EASTERLY OCCUPIED R/W OF "AMERICAN WAY"; THENCE N00°00'04"E, ALONG SAID EASTERLY R/W AND SOUTHERLY EXTENSION THEREOF, 133.00 FT. FOR A P.O.B.; THENCE CONTINUE N00°00'04"E, ALONG SAID EASTERLY R/W, 164.99 FT. TO THE SW. CORNER OF THAT CERTAIN PARCEL OF LAND AS DESCRIBED AND RECORDED IN O.R. BOOK 208, PAGE 156 AND 157, PUBLIC RECORDS OF MANATEE COUNTY, FLORIDA; THENCE N89°38'46"E, ALONG THE SOUTH LINE OF SAID CERTAIN PARCEL, 130.00 FT. TO THE SE. CORNER THEREOF; THENCE N00°00'04"E, ALONG THE EAST LINE OF SAID CERTAIN PARCEL, AND THE EAST LINE OF THAT CERTAIN PARCEL OF LAND AS DESCRIBED AND RECORDED IN O.R. BOOK 240, PAGE 167 AND 168, AFORESAID PUBLIC RECORDS, 270.00 FT. TO THE NE. CORNER OF SAID O.R. BOOK 240, PAGE 167 AND 168; THENCE S89°38'46"W, ALONG THE NORTH LINE OF SAID O.R. BOOK 240, PAGE 167 AND 168, 130.00 FT. TO THE NW. CORNER THEREOF; THENCE N00°00'04"E, ALONG THE EASTERLY R/W OF SAID "AMERICAN WAY", 100.00 FT. TO THE INTERSECTION WITH THE NORTH LINE OF THE SW  $\frac{1}{4}$  OF THE SE  $\frac{1}{4}$  OF THE SE  $\frac{1}{4}$  OF SAID SECTION 22; THENCE N89°38'46"E, ALONG SAID NORTH LINE, AS SHOWN ON THE PLAT OF "TRAILER ESTATES", RECORDED IN PLAT BOOK 8, PAGE 138 THRU 141, AFORESAID PUBLIC RECORDS, 360.51 FT.; THENCE S00°30'47"E, PARALLEL WITH THE EAST LINE OF SAID SW  $\frac{1}{4}$  OF THE SE  $\frac{1}{4}$  OF THE SE  $\frac{1}{4}$ , AND 290.0 FT. WESTERLY THEREFROM, 534.90 FT.; THENCE S89°38'00"W, PARALLEL WITH THE SOUTH LINE OF SAID SECTION 22, AND 133.0 FT. NORTHERLY THEREFROM, 365.31 FT. TO THE P.O.B., BEING AND LYING IN THE SW  $\frac{1}{4}$  OF THE SE  $\frac{1}{4}$  OF THE SE  $\frac{1}{4}$  OF SEC. 22, TWP. 35 S., RGE. 17 E., MANATEE COUNTY, FLORIDA.

## LOCATION MAP

(SCALE: 1" = 2  $\frac{1}{2}$  miles)

SCALE OF MILES



## EASEMENT DEDICATION

THERE ARE HEREBY EXPRESSLY RESERVED EASEMENTS OF 5 FEET ALONG THE FRONT AND REAR LINES OF ALL LOTS FOR UNDERGROUND AND OVERHEAD UTILITIES, SURFACE AND UNDERGROUND DRAINAGE, AND EASEMENTS OF 5 FEET ALONG EACH SIDE LOT LINE FOR THE SAME PURPOSES. BUT LIMITED IF USED TO ONE SIDE OF ANY ONE LOT. WHERE MORE THAN ONE LOT IS INTENDED AS A BUILDING SITE, THE OUTSIDE BOUNDARIES OF SAID BUILDING SITE SHALL CARRY SAID EASEMENTS. ALL OTHER EASEMENTS SHOWN ON THIS PLAT ARE HEREBY RESERVED IN PERPETUITY FOR THE PURPOSES NOTED.

## SURVEYOR'S CERTIFICATE

I, THE UNDERSIGNED PROFESSIONAL LAND SURVEYOR, HEREBY CERTIFY THAT THIS PLAT IS A TRUE AND CORRECT REPRESENTATION OF THE LANDS SURVEYED, THAT THE SURVEY WAS MADE UNDER MY RESPONSIBLE DIRECTION AND SUPERVISION, THAT THE SURVEY DATA COMPLIES WITH ALL OF THE REQUIREMENTS OF CHAPTER 177 OF THE FLORIDA STATUTES, AND THAT ALL P.R.M.'s HAVE BEEN SET.

BY:

**BILL ROBERTS, INC.**  
LAND SURVEYORS  
BRADENTON, FLORIDA

DATE: 5/29/81

Gerald D. Stroop  
GERALD D. STROOP, PROFESSIONAL  
LAND SURVEYOR, FLA. CERT. NO. 1876

## CERTIFICATE OF OWNERSHIP AND DEDICATION

STATE OF FLORIDA, S.S.  
COUNTY OF MANATEE, S.S.

JAMES PIERONI, STEWART LINCOLN, FORREST LINCOLN, AND EDWARD E. BLANCHARD JR., AS TENANTS IN COMMON, CERTIFY OWNERSHIP OF THE PROPERTY DESCRIBED HEREON, AND DO HEREBY DEDICATE ALL OF THE STREETS, DRAINAGE AND EASEMENTS SHOWN ON THIS PLAT ENTITLED "AMERICAN PARK" TO THE USE OF THE GENERAL PUBLIC FOREVER.

IN WITNESS WHEREOF WE, JAMES PIERONI, STEWART LINCOLN, FORREST LINCOLN, AND EDWARD E. BLANCHARD JR., AS TENANTS IN COMMON, HAVE HERETO SET OUR HANDS AND SEALS THIS 1 DAY OF JUNE, A.D. 1981.

J. B. Scipione  
WITNESS

James Pieroni  
JAMES PIERONI

Jonda S. Barron  
WITNESS

Stewart Lincoln  
STEWART LINCOLN

Gerald D. Stroop  
WITNESS

Forrest Lincoln  
FORREST LINCOLN

Edward E. Blanchard Jr.  
WITNESS

Edward E. Blanchard Jr.  
EDWARD E. BLANCHARD JR.

STATE OF FLORIDA, S.S.  
COUNTY OF MANATEE, S.S.

BEFORE ME, THE UNDERSIGNED NOTARY PUBLIC, PERSONALLY APPEARED JAMES PIERONI, STEWART LINCOLN, FORREST LINCOLN, AND EDWARD BLANCHARD, AS TENANTS IN COMMON, TO ME KNOWN TO BE THE INDIVIDUALS DESCRIBED HEREIN AND WHO EXECUTED THE FOREGOING CERTIFICATE OF DEDICATION, AND THEY EACH DULY ACKNOWLEDGE BEFORE ME THAT THEY EXECUTED THE SAME.

WITNESS MY HAND AND OFFICIAL SEAL AT MANATEE COUNTY, FLORIDA, THIS 1 DAY OF JUNE, A.D. 1981.  
MY COMMISSION EXPIRES: Sept. 22, 1982

Mamie G. Henson  
NOTARY PUBLIC, STATE OF FLORIDA AT LARGE

## PLANNING COMMISSION CERTIFICATE

IT IS HEREBY CERTIFIED THAT THIS PLAT HAS BEEN OFFICIALLY APPROVED BY THE MANATEE COUNTY PLANNING COMMISSION, AND THAT ALL OF THE REQUIREMENTS OF THE MANATEE COUNTY SUBDIVISION REGULATIONS HAVE BEEN COMPLIED WITH.

DATED THIS 20th DAY OF July, A.D. 1981.

J. S. Cogan  
COUNTY PLANNING DIRECTOR

## CERTIFICATE OF APPROVAL OF THE COUNTY COMMISSION

STATE OF FLORIDA, S.S.  
COUNTY OF MANATEE, S.S.

IT IS HEREBY CERTIFIED THAT THIS PLAT HAS BEEN OFFICIALLY APPROVED FOR RECORD BY THE BOARD OF COUNTY COMMISSIONERS OF THE COUNTY OF MANATEE, FLORIDA, THIS 23 DAY OF July, A.D. 1981.

APPROVED:

County Attorney  
COUNTY ATTORNEY

Harry J. Ely  
COUNTY ENGINEER

7-15-81

ATTEST:

Clerk  
CLERK

Chairman, Board of County Commissioners  
CHAIRMAN, BOARD OF COUNTY COMMISSIONERS

## CERTIFICATE OF APPROVAL OF THE CLERK OF CIRCUIT COURT

STATE OF FLORIDA, S.S.  
COUNTY OF MANATEE, S.S.

I, R.B. SHORE, CLERK OF CIRCUIT COURT OF MANATEE COUNTY, FLORIDA, HEREBY CERTIFY THAT THIS PLAT HAS BEEN EXAMINED AND THAT IT COMPLIES IN FORM WITH ALL OF THE REQUIREMENTS OF THE STATUTES OF FLORIDA PERTAINING TO MAPS AND PLATS, AND THAT THIS PLAT HAS BEEN FILED FOR RECORD IN PLAT BOOK 21, PAGE 13 AND 14, PUBLIC RECORDS OF MANATEE COUNTY, FLORIDA, THIS 23 DAY OF July, A.D. 1981.

R.B. Shore  
R.B. SHORE, CLERK OF CIRCUIT COURT



Book 21 page 14

BLOCK 34 TRAILER ESTATES SUBDIVISION  
Plat book 8, pg. 138-141

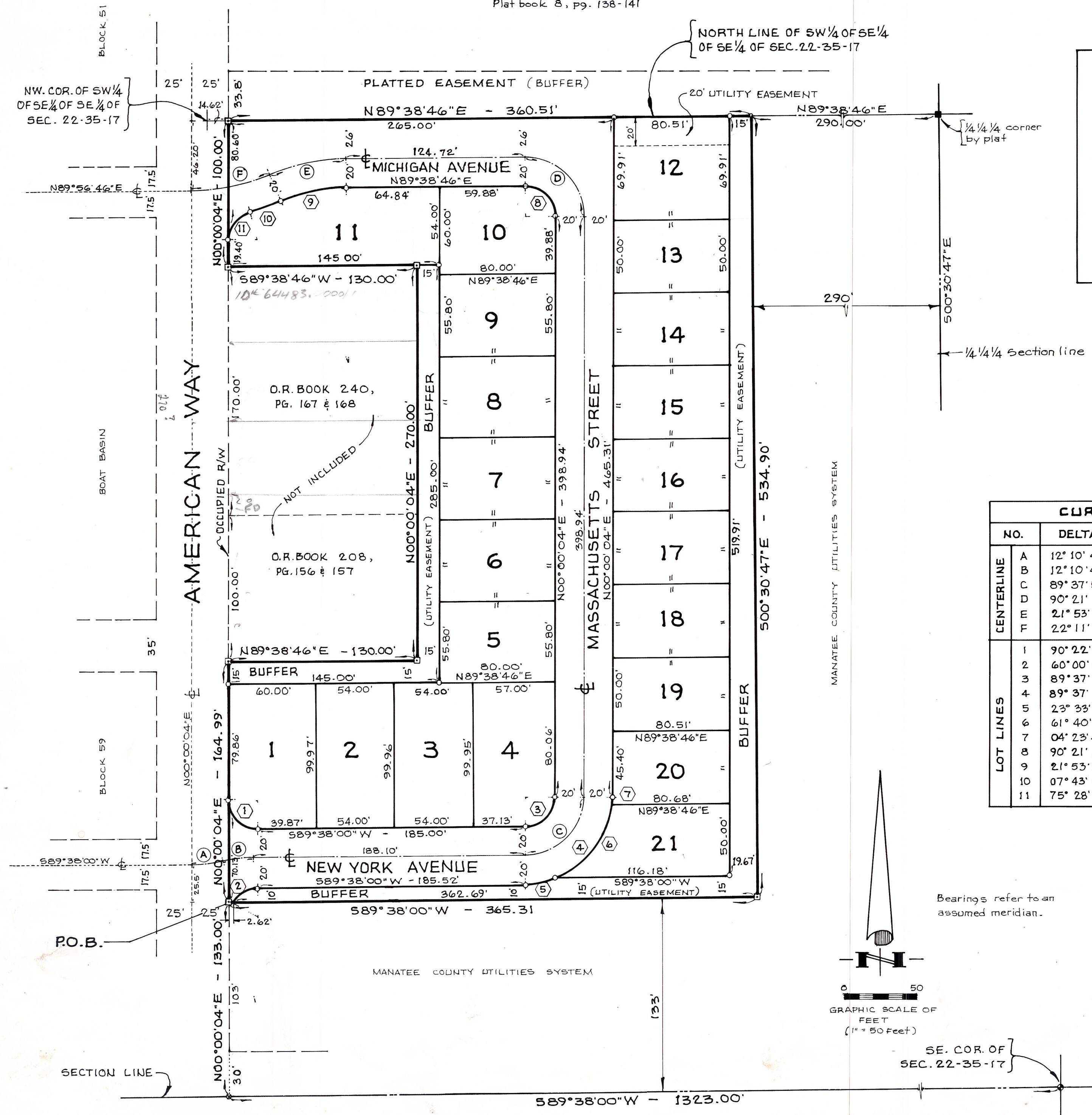
# AMERICAN PARK

A SUBDIVISION IN THE SW 1/4 OF THE  
SE 1/4 OF THE SE 1/4 OF SECTION 22,  
TWP. 35 S., RGE. 17 E., MANATEE  
COUNTY, FLORIDA

810827

FILED AND RECORDED  
R.B. SHORE, CLERK  
MANATEE CNTY., FLA.

JUL 23 4 32 PM '81

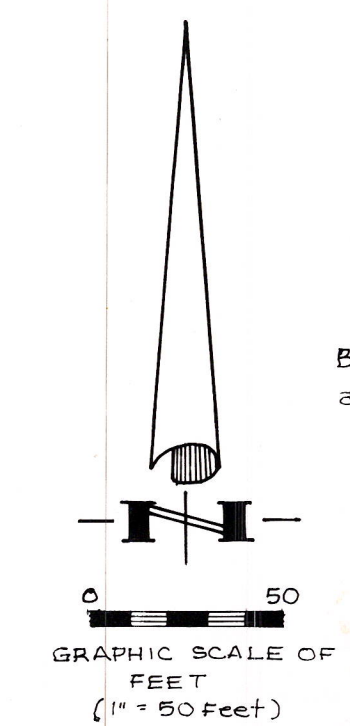


CURVE TABULATION					
NO.	DELTA	RADIUS	LENGTH	TANGENT	CHORD
CENTERLINE	A	12° 10' 40"	100.00'	21.25'	10.67'
	B	12° 10' 40"	100.00'	21.25'	10.67'
	C	89° 37' 56"	40.00'	62.58'	39.74'
	D	90° 21' 18"	40.00'	63.08'	40.25'
	E	21° 53' 54"	140.00'	53.51'	27.08'
	F	22° 11' 54"	140.00'	54.24'	27.47'
LOT LINES	1	90° 22' 04"	20.00'	31.54'	20.13'
	2	60° 00' 00"	20.00'	20.94'	11.55'
	3	89° 37' 56"	20.00'	31.29'	19.87'
	4	89° 37' 56"	60.00'	93.86'	59.62'
	5	23° 33' 23"	60.00'	24.67'	12.51'
	6	61° 40' 47"	60.00'	64.59'	35.82'
	7	04° 23' 46"	60.00'	4.60'	2.30'
	8	90° 21' 18"	20.00'	31.54'	20.12'
	9	21° 53' 54"	120.00'	45.86'	23.22'
	10	07° 43' 55"	160.00'	21.59'	10.81'
	11	75° 28' 43"	20.00'	26.35'	15.48'

## LEGEND

- Railroad spike found
- ⊗ Nail in disc found
- Conc. mon. found
- Conc. mon. (P.R.M.#1876) set
- Conc. mon. (P.C.P.#1876) set

Bearings refer to an assumed meridian.



SE. COR. OF  
SEC. 22-35-17

BILL ROBERTS, INC.  
LAND SURVEYORS